

SELECTION GUIDE

Coating And Finishing Equipment
For The Protective Coatings Market



SOLUTIONS FOR YOUR WORLD

Table of Contents

Overview	2-3
Spray Guns	4-10
Spray Gun Accessories	7, 10-11
Cups & Tanks.....	12-15
Pumps & Pump Outfits	16-19
Pump Accessories.....	20-21
Vinyl Ester Pump Outfit.....	22
CleanAir Air Control Equipment	23
Low Pressure Air & Fluid Hose	24-25
Spray Accessories.....	26-27



DEVILBISS® Ransburg® MS® BGK® BINKS®

Toll Free Customer Support and Technical Assistance
800-992-4657 USA & Canada Only

Toll Free Fax
888-246-5732 USA & Canada Only

SDS sheets are available on the web

SELECTING THE RIGHT EQUIPMENT

It's Critical to Use the Right Equipment for Each Application

Using the right equipment for each step of any spray finishing process is typically the difference between hitting quality, productivity and profitability targets – and not hitting them. Additionally, the ever increasing diversity of coatings dictate careful selection and proper use of equipment.

With nearly 220 years of collective leadership in the spray finishing industry, Binks and DeVilbiss continue to set the equipment standards other brands strive to achieve. Regardless of project type, new and varied coating materials, or other special requirements, Binks and DeVilbiss are dedicated to supporting you with a team of experts – Finishing Specialists, Equipment Design Engineers, Technicians, Trainers and Customer Service Professionals.

We're here to help you improve every aspect of your spray finishing operation – Higher Quality, Increased Productivity, New Cost-Efficiencies, Reduced Downtime, Environmental Compliance... and Improved Bottom-Line Results.

SEEING IS BELIEVING

The DeVilbiss, Ransburg, BGK, MS and Binks Program that helps you convert prospects to customers

DeVilbiss, Ransburg, BGK, MS and Binks offer the widest choice of finishing equipment in the industry today through you, our valued distributor.

DeVilbiss, Ransburg, BGK, MS and Binks firmly believe that if your customer needs reassurance that our equipment is the right choice for them they are a candidate for our "Seeing is Believing" Onsite Equipment Trial program, available only through you, an authorized distributor.

The program is simple. The equipment will be installed on the customer's production line for up to 30 days, no questions asked.

A WIN-WIN situation:

Your customer likes the equipment on trial – you've just made a significant sale and profit.

Your customer finds the equipment does not produce the desired results – you've proven that you are willing to go "above and beyond" to make sure you meet your customer's needs.

This 30-day onsite trial is just one more way DeVilbiss, Ransburg, BGK, MS and Binks help you convert a prospect to a loyal customer of the best recognized brands of spray finishing equipment in the industry.

Don't wait. Start today.

SEEING IS BELIEVING
TRY IT. LIKE IT. BUY IT.
ONSITE EQUIPMENT TRIALS

Atomization Technology Options

Conventional, HVLP, LVMP, Air Assisted Airless and Airless are all types of Atomization technology, each has slightly different operating parameters.

CONVENTIONAL

The most established method of air atomizing, used on spray guns for decades. This type uses high velocity air jets to produce a high atomization power which is very effective in breaking up high solids and high viscosity coatings. Air pressure exiting the air cap during use is typically 40-70 psi (2 to 5 bar) with typical air consumption of 6 to 25 cfm (170 to 700 l/min).

HIGH VOLUME LOW PRESSURE (HVLP)

HVLP uses higher volumes of air (11 to 30 cfm or 300 to 840 l/min) at low pressure (psi) to atomize the coating. HVLP provides high transfer efficiency and is limited by Government Environmental Legislation to a maximum of 10 psi (0.7 bar) atomizing pressure measured at the air cap.

LOW VOLUME MEDIUM PRESSURE (LVMP)

LVMP makes more energy available for the atomization process than HVLP, but delivers transfer efficiencies equivalent to those of HVLP. Air cap pressure is typically in the area of 20 to 45 psi (1.3 to 3 bar) while using 9 to 20 cfm (250 to 560 l/min) for atomization of coatings.

AIR ASSISTED AIRLESS

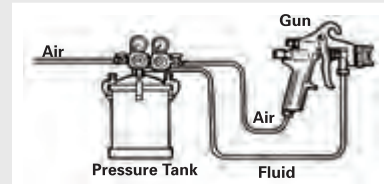
To maximize efficiency, the best features of air spray and airless atomization are combined in this technology. The pattern is formed by the spray tip at between 500 and 2,500 psi fluid pressure and a small amount of air pressure is used to adjust the size of the spray pattern and eliminate "tails".

Air Assisted Airless provides fast application of materials, a soft spray that reduces fog overspray and bounce-back, and the ability to penetrate into recesses and cavities. This is especially important where intricate shapes require a consistent film build.

AIRLESS

Fluid is atomized by high pressure (usually 3,000 – 7,000 psi) and pushed through an orifice in the spray tip which is typically .015" - .035" in diameter. The shape of the orifice determines the shape and size of the spray pattern. With airless technology, the size of the atomized particle is larger than other spray methods and therefore typically not used for achieving fine finishes.

Fluid Delivery Options



Pressure-Feed

This option uses an external pressure source (pressure tank, piston pump, or diaphragm pump) to push fluid to the spray gun nozzle. Air and fluid are then mixed outside the nozzle to atomize the coating.

Advantages: This method delivers higher volumes of fluids than siphon and gravity-feed set-ups, and will spray a wider range of materials. It also enables independent control of fluid and air pressure.



Gravity-Feed

On Gravity-feed guns the cup is located above the gun. The force of gravity pushes the fluid into the gun.

Advantages: This method offers quick color changes and convenience on small jobs or touch up applications. Gravity guns are able to use all of the coating – reducing waste.



Siphon-Feed

Siphon-feed hookups use vacuum created at the nozzle to draw fluid from a cup.

Advantages: This fluid cup system offers quick material / color changes, easy clean-up on smaller jobs.

DeVilbiss Model JGA & JGHV Spray Guns

The JGA standard-size manual spray gun is extremely versatile and rugged. The JGA sets the industry standard for high production performance. The JGHV has all of the great features of the JGA with the added benefit of being HVLP Compliant.

Features & Benefits:

- Plated-brass air caps
- Stainless steel fluid nozzles and needles
- Stainless steel fluid passages for complete material compatibility
- Comfortable "fit and feel" handle design

Viscosity Range: Low to high

Typical Industrial Coatings: Primers, epoxies, urethanes, enamels, adhesives, abrasives, textured coatings, high solids, and zinc rich materials.



Binks Model 2100 Conventional Spray Gun

The Binks Model 2100 is a full sized high production gun. Designed and built with the professional finisher in mind, the 2100 Gun will handle virtually all industrial and protective coatings.

Features & Benefits:

- Wide selection of air nozzles and stainless steel fluid nozzles and needles
- All stainless steel fluid passages for complete material compatibility

Viscosity Range: Low to high

Typical Industrial Coatings: Lacquers, primers, epoxies, urethanes, enamels, adhesives, abrasives, textured coatings, non-stick coatings, high solids, and zinc rich materials.



DeVilbiss Model MBC Conventional Spray Gun

The MBC spray gun combines a drop forged aluminum body with a forged removable spray head which is ideal for quick cleaning and applications which require fast nozzle changes. Special models with set-ups designed to spray solvent and water-borne zinc coatings.

Features & Benefits:

- Plated brass air caps
- Stainless steel fluid nozzles and needles
- Removable spray head with nickel plated brass fluid passages

Viscosity Range: Low to high

Typical Industrial Coatings: Lacquers, primers, epoxies, urethanes, enamels, adhesives, high solids, and zinc rich materials.



DeVilbiss Model EGA & EGHV Touch Up Guns

The EGA is the spray gun of choice for touch up, shading and detail decorating. This conventional touch up gun provides precise control for any type of delicate spray finishing applications. EGHV has all the features of the EGA and is HVLP compliant.

Features & Benefits:

- Stainless steel tip and needle
- Forefinger trigger to enhance operator control
- Long needle taper to make detail work easy

Typical Industrial Coatings: Water based paints, enamels, urethanes, stains and varnishes, inks and dyes, and lacquers.



Part No.	Gun Body	Brand	Model	Technology	Material Compatibility	Material Feed	CFM @ 30 psi	Max Pattern Size (in)	Fluid Nozzle	Fluid Nozzle (mm / in)	Air Nozzle	Fluid Needle Material
JGA-510-704E	Full Size	DeVilbiss	JGA	Conventional	Medium - Heavy	P	21•	10-12	E	1.8 / .070	704	SS **
JGA-510-64HDD	Full Size	DeVilbiss	JGA	Conventional	Medium - Heavy	P	22•	14	D	2.2 / .086	64HD	SS **
JGA-510-57D	Full Size	DeVilbiss	JGA	HVLP	Medium - Heavy	S / P	11	9-11	D	2.2 / .086	57	SS **
JGHV-531-46FF	Full Size	DeVilbiss	JGHV	HVLP	Medium - Heavy	P	22.5	11	FF	1.4 / .055	46MP	SS **
JGHV-531-83D	Full Size	DeVilbiss	JGHV	HVLP	Heavy	P	26	13	D	2.2 / .086	83MP	SS **
JGHV-531-83E	Full Size	DeVilbiss	JGHV	HVLP	Medium - Heavy	P	26	13	E	1.8 / .070	83MP	SS **
MBC-510-64HDD	Full Size	DeVilbiss	MBC	Conventional	Medium - Heavy	P	22•	14	D	2.2 / .086	64HD	SS **
MBC-510-64HDE	Full Size	DeVilbiss	MBC	Conventional	Medium - Heavy	P	22•	14	E	1.8 / .070	64HD	SS **
MBC-ZINC-S ##	Full Size	DeVilbiss	MBC	Conventional	Medium - Heavy	P	22	14	D	2.2 / .086	64HD	SS **
MBC-ZINC-W ^^	Full Size	DeVilbiss	MBC	Conventional	Medium - Heavy	P	16	8-10	D	2.2 / .086	100L	SS **
2101-4307-9	Full Size	Binks	2100	Conventional	Medium - Heavy	P	7.9	7-11	66SS	1.8 / .070	66SD	SS ***
2101-5111-5	Full Size	Binks	2100	Conventional	Medium - Heavy	P	9.5	12	68SS	2.8 / .110	68PB	SS ***
EGA-503-390F	Touch Up	DeVilbiss	EGA	Conventional	Light - Medium	S / P	3	3	F	1.0 / .039	390	SS
EGHV-531-397E	Touch Up	DeVilbiss	EGHV	HVLP	Light - Medium	S / P	8.8*	6	E	1.8 / .070	397	SS

Notes: • CFM @ 80 psi

• CFM @ 50 psi

** UHMWPE and Carboly Tips and Needles are available for this model

*** VT (Vitrous) set-up is available for this model

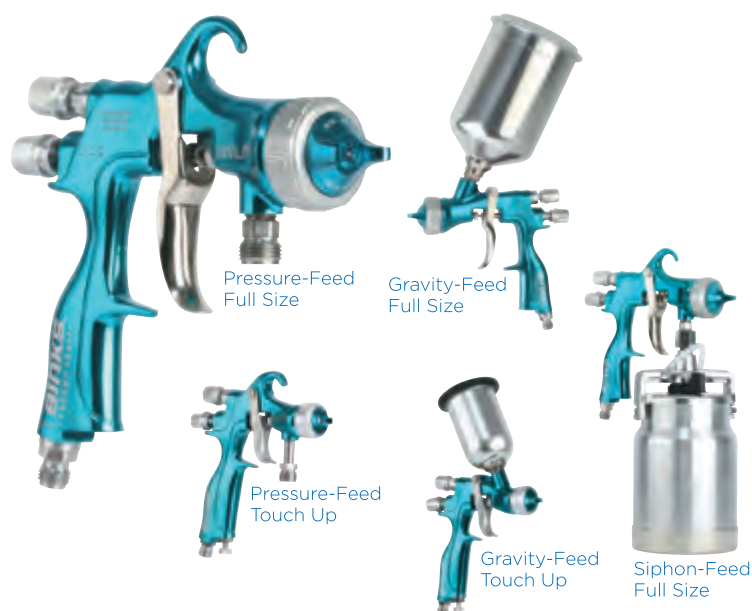
S Siphon Feed

P Pressure Feed

MBC-ZINC-S for Solvent-borne Zinc Coatings, has leather packings and heavy duty needle spring, 64HD Air Cap

^^ MBC-ZINC-W for Water-borne Zinc Coatings, has leather packings, heavy duty needle spring, Gti-100-L Delrin Air Cap and Gti-3 Delrin Retaining Ring

Binks Trophy™ Low Pressure Spray Guns



APPLICATION VERSATILITY

- **Sizes:** Full size and touch up
- **Spray Technologies:**
HVL, LVMP (Compliant), Conventional
- **Gun Body Colors:**
Blue (HVL) / green (LVMP) / brown (Conventional)
- **Fluid Nozzles and Needle Set-Ups:**
Tuff tip hardened stainless steel nozzles, tungsten carbide, plastic tip needles, and feathering needles
- Available in pressure-feed, gravity-feed, and siphon-feed

ERGONOMIC DESIGN

- Lightweight
- Curved handle for increased comfort
- Oversized knobs and air cap ring for easy adjustments and maintenance
- Soft trigger pull for reduced stress and fatigue
- Smooth trigger pull for providing no-kickback during spraying

ROBUST ENGINEERING

- Large stainless steel fluid passages for compatibility with industrial coatings
- Long lasting brass inserts and seals
- Hardened stainless steel fluid nozzles
- Large air passages
- Anodized forged aluminum gun body provides durability

Part No.	Gun Body	Brand	Model	Technology	Material Compatibility	Material Feed	CFM @ 30 psi	Max Pattern Size (in)	Fluid Nozzle	Fluid Nozzle (mm/in)	Air Nozzle	Fluid Needle Material
2465-16CN-12SO	Full Size	Binks	Trophy	Conventional	Thin / Med / Heavy	S / P	8	12	16	1.6 / .063	12C	SS
2465-26CN-14VO	Full Size	Binks	Trophy	Conventional	Heavy - Zinc Coatings	P	17	14	26	2.6 / .102	14C	Tungsten Carbide
2465-16LV-23SO	Full Size	Binks	Trophy	LVMP	Medium - Heavy	P	11	14	16	1.6 / .063	23L	SS
2465-18LV-23SS	Full Size	Binks	Trophy	LVMP	Thin - Medium	S	11	8	18	1.8 / .070	23L	SS
2465-18LV-23SG	Full Size - Gravity	Binks	Trophy	LVMP	Medium - Heavy	G	11	8	18	1.8 / .070	23L	SS
1465-14LV-B1S	Touch Up	Binks	Trophy	LVMP	Heavy	P	5	5-7	14	1.4 / .055	B1	SS
2465-18HV-32SO	Full Size	Binks	Trophy	HVLP	Medium - Heavy	P	16	18	18	1.8 / .070	32H	SS
2465-18HV-32SS	Full Size	Binks	Trophy	HVLP	Thin - Medium	S	16	6-9	18	1.8 / .070	32H	SS
2466-18HV-32SG	Full Size - Gravity	Binks	Trophy	HVLP	Medium	G	18	12	18	1.8 / .070	32H	SS
1465-14HV-C1S	Touch Up	Binks	Trophy	HVLP	Medium - Heavy	P	8	5-7	14	1.4 / .055	C1	SS

Notes: S Siphon Feed
G Gravity Feed
P Pressure Feed

SprayVantage Pro Series

Binks SprayVantage Pro Series spray guns offer great value to professional painters, contractors and do-it-yourselfers alike. Available in both conventional and HVLP models, these spray guns are used in pressure-feed, gravity-feed and siphon-feed applications. The SprayVantage3 portable spray finishing system includes a 3 hp air compressor on a cart, 2.8 gallon ASME rated pressure tank, 25' of air and fluid hose and your choice of two guns, SV100 or the 2100 gun with Multi-Color set-up.



98-3163



98-3162



98-3164

CHOOSE YOUR SPRAY GUN

SV100 Siphon-Feed Conventional Spray Gun w/Cup
Part No.: 98-3161 • **Tips Included:** 1.8mm
 Recommended 10-15 CFM / 30-45 psi

SV100 HVLP Gravity-Feed Spray Gun w/Cup
Part No.: 7042-6931-4
Tips Included: 1.4mm, 2.0mm
 Recommended 10-14 CFM / 20-27 psi

SV100 HVLP Pressure-Feed Spray Gun Only
Part No.: 7041-6931-1
Tips Included: 1.1mm, 1.4mm, 1.8mm
 Recommended 10-14 CFM / 20-27 psi

SV100 2 Qt. Outfit: HVLP Pressure-Feed
Part No.: 98-3162
Tips included: 1.1mm, 1.4mm
 Recommended 10-14 CFM / 20-27 psi

SV100 2 Gal. Outfit: HVLP Pressure-Feed
Part No.: 98-3163
Tips Included: 1.1mm, 1.4mm
 Recommended 10-14 CFM / 20-27 psi

SprayVantage3™ Fine Finishing Systems
Part No.: 98-3164 • SV100*
Part No.: 98-1266 • Multi-Color with 2100 Gun
 (*690 Air cap is recommended for SV100 Gun)

	LIGHT				MEDIUM				HEAVY			
	Sealers	Wash Primers	Stain	Nitro Lacquer	Epoxies	Varnishes	Thinned Latex	Topcoat-Lacquer	Latex	Enamels	Polyurethane	Contact Adhesives
SV100 Siphon-Feed Conventional Spray Gun w/Cup	■	■	■	■	■	■	■	■	■	■		
SV100 HVLP Gravity-Feed Spray Gun w/Cup	■	■	■	■	■	■	■	■	■	■		
SV100 HVLP Pressure-Feed Spray Gun Only	■	■	■	■	■	■	■	■	■	■	■	■
SV100 2 Qt. Outfit: HVLP Pressure-Feed	■	■	■	■	■	■	■	■	■	■	■	■
SV100 2 Gal. Outfit: HVLP Pressure-Feed	■	■	■	■	■	■	■	■	■	■	■	■
SprayVantage3™ Fine Finishing Systems	■	■	■	■	■	■	■	■	■	■	■	■

98-3161



7041-6931-1



7042-6931-4



Binks Model 7E2

Designed for spraying heavy bodied and filled materials such as non-skid, roof coatings, block fillers and others.

- Extra-Large fluid passages for maximum fluid flow
- Durable drop forged, plated brass spray head
- Adjustable floating needle valve and stainless air valve cartridges
- Comfortable hardened steel, four finger trigger

Standard Set-Ups Available:

- 6102-2900-7 7E2 GUN 44SS-1/4
- 6102-3525-9 7E2 GUN 46SS-391
- 6102-3600-7 7E2 GUN 45SS-1/4
- 6102-3601-7 7E2 GUN 45SS-3/8
- 6102-3602-3 7E2 GUN 45SS-3/8F

Specifications:

- **Air Inlet:** 3/8" nps (m)
- **Fluid Inlet:** 3/4" nps (m)
- **Weight:** 30 oz.

Service Bulletin: 77-1341



Binks Model 2100GW

The Binks 2100GW spray gun is a hand-held, spray gun for limited application of two-component materials such as gel-coats or polyesters. The trigger action stops and starts spraying both materials simultaneously.

Standard Set-Ups Available:

- 2100GW Gun w/66SSx66SD (2100-4307-9GW)
- 2100GW Gun w/68SSx68PB (2100-5111-5GW)

Specifications:

- **Air Inlet:** 1/4" nps (m)
- **Fluid Inlet:** 3/8" nps (m)
- **Weight:** 24 oz.

Service Bulletin: 77-2936



Gun Extensions

Nozzle extensions are designed to reach out of the way places, such as the inside of large and small diameter pipe. There are models for general use and for specific applications. Extensions are available for both air atomizing and airless spray guns. See page 10 for airless extensions.

	Clearance Diameter (inches)	Nozzle Set-Up	Standard Lengths (inches)	For Gun Model	Part Sheet Reference (77-)
EA	1 3/4	Std. External or Internal Mix*	9, 15, 24, 36, ♦	2100, 95, 95A, 95AR	1368, 2659, 2660
EAX	7/8	External or Internal Mix*	♦	2100, 95, 95A	1369, 2659, 2660
EB	3	Std. External or Internal Mix* ▼	6, 12, 15, 18, 24, ♦	2100, 21, 95, 95AR	1370, 2659, 2660
EBX	1 7/8	External or Internal Mix*	♦	2100, 95, 95A	1371, 2659, 2660
EN	2 1/2	Std. External or Internal Mix* ▼	6, 12, 18, 36, 48, ♦	2100, 21, 95, 95A, 95AR	1372, 2659, 2660
ENX	1 3/4	External or Internal Mix*	♦	2100, 95, 95A	1373, 2659, 2660
ERX	1 7/8	External or Internal Mix*	♦	2100, 95, 95A	1374, 2659, 2660
C	3/4	Circular (360°)*	6, 12, 18, 24, 36, 48, 60, 72, 84, ♦, 12, 24, 36, 48, 60, 72, 84	2100, 21, 95, 95A, 95AR	1367, 2082, 2659, 2660
HC	90°				
SC	3/8	Circular (360°)*	9, 12, 18, 27, 33, 39, 51, 63, 75, 87, ♦	2100, 21, 95, 95A	1328, 2659, 2660
SA	7/16	Round (Not Adjustable)	♦	2100, 95, 95A	1328, 2659, 2660
CVT	1 1/8	Same as for Models C and HC Except Nozzles have Tungsten Carbide Inserts*	♦	2100, 95, 95A	2083, 2659, 2660
HCVT					
52-1382	1 3/8	Special for Pipe Interior Circular 360°	1/4" Pipe Not Included	Gun Not Required	—
52-2410	3/4	Circular 360°	5/16" I.D. Fluid Hose and Clamps Not Included	2100, 95	—

*See Nozzle and Needle Selection in the Conventional Spray Guns & Accessories Guide

KEY CODE: ■ = High volume material flow.

♦ = Any length not shown made to order (custom).

▼ = Extension is available with stainless steel fluid nozzle having tungsten carbide insert.

Specify "VT" when ordering. See nozzle setup table.

Automatic Airless Spray Guns - High Pressure

Binks
Model 550



Binks Model 550

Automatic airless gun for spraying protective coatings such as lacquers, enamels, waterbased emulsions, mold release agents, and sound deadeners. Spray gun equipped with tip guard, stainless steel fluid passages, and forged aluminum spray gun body. Actuating air pressure is 40-60 psi. The material inlet may be installed in any of four positions to facilitate fluid hose connection.

Binks Model 570

Same as Model 550, but constructed with larger fluid inlet opening and fluid passages. Used for spraying heavy materials such as mastics and undercoatings.

Spray tip is not included, order separately.

(Maximum operating pressure is 3000 psi.)

Specifications:

- **Part Number:** Model 550 - 6700-000-5, Model 570 - 6700-0000-7
- **Air Inlet:** Model 550 - 1/4" nps (m), Model 570 - 1/4" nps (m)
- **Fluid Inlet:** Model 550 - 1/4" nps (m), Model 570 - 1/2" npt (f)
- **Weight:** Model 550 - 24 oz., Model 570 - 40 oz.

Service Bulletin: Model 550 - 77-2120, Model 570 - 77-2122

Binks
Model 30



Binks Model 30 Bead Gun (& Model 30A High Flow)

Designed for laying out glass bead during a line striping operation. Use on hand line strippers or moving trucks.

- Will spread glass beads at a rate of 20 lbs. per minute
- Pneumatically operated using a minimum of 50 psi
- Furnished with four nozzle inserts with orifice diameters of 7/32", 1/4", 9/32" and 11/32"

Specifications:

• Part Number:

Standard Model 30 Bead Gun - 6279-0000-1

Model 30 Bead Gun with Big Bore - 6279-0000-5

- **Weight:** 6 lbs. 1 oz.

Service Bulletin: 77-2151

Binks Model 140B

Use for spraying solvents to clean engines and other machinery.



- Features a rugged brass body
- Ten inch nozzle/tube length for hard to reach places
- Includes flexible tubing with hose clamp for siphoning solvent from a container

Specifications:

- **Part Number:** 6530-000-1
- **Air Inlet:** 1/4" NPS (m)
- Requires 14 CFM air at 50 psi

Service Bulletin: 77-1191

Model 190 Air Blow Gun

Use for dusting, drying, removing chips, etc. from surfaces.



- Pistol grip style with aluminum die cast body
- Nozzle part number 60-40 (complies with paragraph 50-204 Walsh-Healy Act and OSHA where air inlet does not exceed 100 psi with 1/16" orifice is standard)
- Also available with part number 60-41 5-1/2" extension (optional)

Specifications:

- **Part Number:** 6580-000-1
- **Air Inlet:** 1/4" NPT (m)
- **Air Consumption:** 3.5 CFM at 50 psi

Service Bulletin: 77-1108

Atomization: Medium & High Pressure Spray Guns



Binks
Airless 75

Binks
Airless 75M



Binks
AA1600

Binks
AA4400M

Binks Airless 75 & 75M Spray Guns

Operators will feel the difference when spraying the lightweight Airless 75 spray guns due to the contoured ergonomic handle design.

- The forged aluminum gun body is made to outlast the competition
- Extra wide stainless steel fluid passageways will accommodate a wide range of coatings
- Sprays high solids and heated coatings up to 7,500 psi with optional heat guard
- Two-finger triggers with ergonomic handle to reduce operator fatigue
- Unique needle design keeps the spring out of the fluid path
- 75M spray gun features a larger 3/8" inlet for spraying fire retardants and fibrous coatings, and includes a high pressure swivel fitting
- Thick-walled stainless steel fluid tube for abrasive coatings

Binks AA1600 & AA4400M Air Assisted Airless Spray Guns

- Easy to remove "IN-LINE" needle reduces repair time
- One tool trigger removal speeds up assembly and disassembly
- Adjustable packing can be tightened without disassembly
- Lightweight gun and ergonomic handle reduce operator stress and fatigue
- Anodized aluminum air caps resist corrosion
- HVLP or LVMP Technologies provide a wider choice of spray options
- Unique Twist Tip option quickly and easily removes clogs
- Easily adjustable fan pattern from control knob at back of gun
- **AA1600 with UHMW Seat** is ideal for applications spraying low to medium viscosity coatings at less than 1600 psi
- **AA4400M with Tungsten Carbide Seat** is best for high viscosity fluids and heavy industrial applications
- A wide variety of both twist and flat tip sizes are available for spraying many different types of coatings

Part No.	Fluid Hose Connection	Brand	Model	Technology	Diffuser	Max Fluid Pressure Rating (psi)	Tips Used	Air Cap	CFM @ psi	Max Pattern Size (in)
0811-7500-1	SS Fluid Tube	Binks	Airless 75	Airless	Three Hole	7500	Twist Tip	—	—	See Tip Chart*
0811-7500-2	Direct Connect	Binks	Airless 75	Airless	Three Hole	7500	Twist Tip	—	—	See Tip Chart*
0811-7500-3	Direct Connect	Binks	Airless 75	Airless	Single Hole	7500	Twist Tip	—	—	See Tip Chart*
0811-7500-4	Direct Connect	Binks	Airless 75M	Airless - For Heavy / Filled Material	Single Hole	7500	Twist Tip	—	—	See Tip Chart*
0909-1600-HF0000	SS Fluid Tube	Binks	AA-1600M	Air Assist Airless	Single Hole	1600	Flat Tip	HVLP	8.3@14	See Tip Chart*
0909-1600-HT0000	SS Fluid Tube	Binks	AA-1600M	Air Assist Airless	Single Hole	1600	Twist Tip	HVLP	8.3@14	See Tip Chart*
0909-4400-HF0000	SS Fluid Tube	Binks	AA-4400M	Air Assist Airless	Single Hole	4400	Flat Tip	HVLP	8.3@14	See Tip Chart*
0909-4400-HT0000	SS Fluid Tube	Binks	AA-4400M	Air Assist Airless	Single Hole	4400	Twist Tip	HVLP	8.3@14	See Tip Chart*
0909-4400-LF0000	SS Fluid Tube	Binks	AA-4400M	Air Assist Airless	Single Hole	4400	Flat Tip	LVMP	13@30	See Tip Chart*
0909-4400-LT0000	SS Fluid Tube	Binks	AA-4400M	Air Assist Airless	Single Hole	4400	Twist Tip	LVMP	13@30	See Tip Chart*

Note: *See Tip Charts on page 10. The above part numbers do NOT include tips. Order tips separately.

Atomization: Medium & High Pressure Spray Guns

TWIST TIP & FLAT TIP ORDERING CHART

Orifice Size	Fan Pattern Size (in.)	Twist Tip Part No.	Flat Tip Part No. for Airless 550 & 570 Auto Guns	All 9-Series Tips- GPM Flow*	Flat Tip Part # (AA1600 & AA4400)	All 114-Series Tips- GPM Flow*
.007	6	9-307-75	—	0.050	—	—
.009	6	9-309-75	—	0.090	—	—
.009	8	9-409-75	—	0.090	—	—
.009	10	9-509-75	—	0.090	—	—
.011	6	9-311-75	—	0.120	—	—
.011	8	9-411-75	9-1170	0.120	—	—
.011	10	9-511-75	9-1170	0.120	—	—
.011	12	9-611-75	9-1180	0.120	—	—
.013	6	9-313-75	—	0.180	—	—
.013	8	9-413-75	—	0.180	—	—
.013	10	9-513-75	9-1360	0.180	—	—
.013	12	9-613-75	9-1360	0.180	—	—
.013	14	9-713-75	9-1380	0.180	—	—
.015	6	9-315-75	—	0.240	114-01506	0.120
.015	8	9-415-75	9-1550	0.240	114-01508	0.120
.015	10	9-515-75	9-1550	0.240	114-01510	0.120
.015	12	9-615-75	9-1560	0.240	114-01512	0.120
.015	14	9-715-75	9-1590	0.240	114-01514	0.120
.015	16	—	9-1590	0.240	114-01516	0.120
.015	18	—	—	—	114-01518	0.120
.017	6	—	—	—	114-01706	0.160
.017	8	9-417-75	—	0.310	114-01708	0.160
.017	10	9-517-75	—	0.310	114-01710	0.160
.017	12	9-617-75	—	0.310	114-01712	0.160
.017	14	9-717-75	—	0.310	114-01714	0.160
.017	16	—	—	—	114-01716	0.160
.017	18	—	—	—	114-01718	0.160
.018	10-12	—	9-1840	0.330	—	—
.018	12-14	—	9-1860	0.330	—	—
.019	6	—	—	—	114-01906	0.190
.019	8	9-419-75	—	0.380	114-01908	0.190
.019	10	9-519-75	—	0.380	114-01910	0.190
.019	12	9-619-75	—	0.380	114-01912	0.190
.019	14	—	—	—	114-01914	0.190
.019	16	—	—	—	114-01916	0.190
.019	18	—	—	—	114-01918	0.190
.021	10	9-521-75	—	0.470	114-02110	0.240
.021	12	9-621-75	—	0.470	114-02112	0.240
.021	14	—	—	—	114-02114	0.240
.021	16	—	9-2180	0.470	114-02116	0.240
.021	18	—	9-2180	0.470	114-02118	0.240
.023	10	9-523-75	—	0.570	—	—
.023	12	9-623-75	—	0.570	—	—
.024	10	—	—	—	114-02410	0.310
.024	12	—	—	—	114-02412	0.310
.024	14	—	—	—	114-02414	0.310
.024	16	—	—	—	114-02416	0.310
.024	18	—	—	—	114-02418	0.310
.025	10	9-525-75	—	0.670	—	—
.025	12	9-625-75	—	0.670	—	—
.026	12-14	—	9-2640	0.690	—	—
.027	10	—	—	—	114-02710	0.385
.027	12	9-627-75	—	0.740	114-02712	0.385
.027	14	—	—	—	114-02714	0.385
.027	16	—	—	—	114-02716	0.385
.027	18	—	—	—	114-02718	0.385
.035	8	9-435-75	—	1.31	—	—
.043	12-14	—	9-4340	1.60	—	—

*Note: All tip flow rates measured @ 500 psi water pressure

Airless Gun Extensions (Use on Airless 75 & 75M Spray Guns)

- Used to extend your reach
- Fluid is shut off at the front of the gun
- Fits Airless 75 and 75M Airless spray guns
- Use 49-1834 adapter to use on Airless 1 spray guns
- Use 52-5207 Airless Swivel Head for angular spray
- Extension does not include airless tip or tip guard (order separately)



ACCESSORIES

Part No.	Description
Airless Gun Extensions	
52-5203	10" 3500 psi Airless Tip Extension
52-5204	15" 3500 psi Airless Tip Extension
52-5205	20" 3500 psi Airless Tip Extension
52-5206	30" 3500 psi Airless Tip Extension
52-5208	36" 7500 psi Airless Tip Extension
52-5209	60" 7500 psi Airless Tip Extension
Tip Accessories	
54-5788-K5	60 Mesh* (Kit of 5)
54-5789-K5	100 Mesh* (Kit of 5)
72-2332	Fluid Inlet Swivel (1/4"m x 1/4"f)
54-5830-K3	3/8" Air Inlet Push in Tube Fittings
54-5799-K	Tungsten Carbide Seat Flat Tip
54-5832-K	Tungsten Carbide Seat Twist Tip
54-5797-K	LVMP Air Cap Flat Tip
54-5798-K	LVMP Air Cap Twist Tip
Airless 75 Accessories	
72-2332	Micro Swivel 1/4"m x 1/4"f (550 bar)
72-2333	Micro Swivel 3/8"m x 1/4"f (550 bar)
72-2340	H.P. Swivel with Inlet Filter (60 Mesh)
72-2341	H.P. Swivel with Inlet Filter (100 Mesh)
54-1836	60 Mesh Filter
54-1835	100 Mesh Filter
72-2339	High Pressure "Y" Block (7250 psi Max)
54-7527	Heat Guard (Accessory)

New Mesh Filters Available in 2 Sizes

*60 mesh filters come standard with all guns.

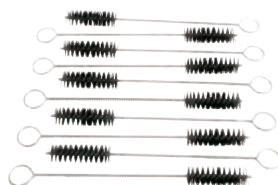
SPECIFICATIONS

AIRLESS 75		
Max. Fluid Pressure:	7500 psi (517 bar)	
Gun Body:	Anodized Aluminum	
Max. Temperature:	175°F (79°C) (Heat Guard Required)	
Fluid Path:	Stainless Steel	
Fluid Inlet:	1/4" NPS (3/8" NPS for 75M)	
Gun Weight:	660g	
AA1600M		AA4400M
Max. Fluid Pressure:	1600 psi / 110 bar	4400 psi / 303 bar
Max. Air Pressure:	100 psi / 6.8 bar	100 psi / 6.8 bar
Gun Body:	Forged Aluminum	Forged Aluminum
Fluid Path:	Stainless Steel / UHMW / Tungsten Carbide	Stainless Steel / Tungsten Carbide
Seat:	UHMW (Standard) / Tungsten Carbide (Optional)	Tungsten Carbide
Fluid Inlet:	1/4 NPS(m) Thread	1/4 NPS(m) Thread
Air Inlet:	1/4 NPS(m) Thread	1/4 NPS(m) Thread
Gun Weight: Without Tip, Air Cap, Guard	17.28oz / 490g	17.42oz / 494g
Part Sheet:	77-2921	77-2922

Atomization: Spray Gun Accessories



Cleaning Brushes
3/8" Diameter Spiral Brushes
PART NO.: 42884-214-K5



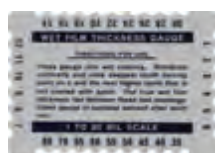
Cleaning Brushes
5/8" Diameter Spiral Brushes
PART NO.: 42884-215-K10



Air Cap Cleaning Kit
Air Cap Cleaning Kit -
Includes 2 Small Spiral Brushes
and 1 Wire Tool on Key Ring
PART NO.: KK-5060



**Professional Gun
Cleaning Kit**
PART NO.: 192212



Wet Film Gauge
PART NO.: 237-707



Gun Wrench
PART NO.: WR-103



**Vinyl Coated Gun
Hook Assembly**
PART NO.: 192219



**Gunner's Mate
Spray Gun Lube**
PART NO.: 6-429



**Scrubs Hand
Cleaning Towels**
PART NO.: 29-3100



Gun Mounted Air Adjusting Valves
PART NO.: HAV-501 OR HAV-500
Air Adjusting Valve (not shown)
PART NO.: P-H-5516



**Gun Mounted
Air Regulator w/ Gauge**
PART NO.: HARG-510



Whirlwind™ In-Line Air Filter
PART NO.: HAF-507-K12



Spray Gun Covers
4/Kit - PART NO.: GC-100-K42
48/Kit - PART NO.: GC-100-K48



Binks Spray Gun Extension Arm

- Allows painter to spray hard to reach places
- Extension arm fits spray gun models
- Must be pressure fed from pressure tank or pump
- Available in 4', 6' and 8' lengths
- 73-131 adapter required for some spray guns (order separately). See chart on the right
- Spray gun not included (order separately)

Length	Extension Part No.
4'	54-296
6'	54-297

SPRAY GUN COMPATIBILITY CHART

Binks 2100 Spray Gun	73-131 Adapter Not Required
Binks Model 7 Spray Gun	73-131 Adapter Not Required
Binks 2001 Spray Gun	Requires 1 ea 73-131 Adapter
Binks Mach 1 HVLP Spray Gun	Requires 1 ea 73-131 Adapter
Binks Mach 1SL HVLP Spray Gun	Requires 1 ea 73-131 Adapter
Binks 95 Spray Gun	Requires 1 ea 73-131 Adapter
Binks 95SL Spray Gun	Requires 1 ea 73-131 Adapter
Binks SV100 Spray Gun	Requires 2 ea 73-131 Adapter
DeVilbiss MBC Spray Gun	73-131 Adapter Not Required
DeVilbiss JGA Spray Gun	Requires 1 ea 73-131 Adapter
DeVilbiss JGHV HVLP Spray Gun	Requires 1 ea 73-131 Adapter
DeVilbiss EXL Spray Gun	Requires 1 ea 73-131 Adapter
DeVilbiss FLG-III Spray Gun	Requires 1 ea 73-131 Adapter
DeVilbiss Compact Series	Requires 2 ea 73-131 Adapter

Fluid Delivery: Low Pressure Siphon / Gravity / Pressure Feed Cups



81-540



54-6106



81-800 (Shown) /
81-810 / 81-820



80-294 (Shown) /
80-511



80-600 / 80-601 /
80-651 (Shown)



80-295

Part No.	Description	Brand	Material Feed	Wetted Parts	Fluid Regulation	Air Agitator	Liner Part No.
Sri-510	4 oz. Gravity Cup	Binks	Gravity	Acetyl (Composite)	No	No	None
81-381	8 oz. Gravity Cup	Binks	Gravity	Aluminum	No	No	None
54-6106	1 qt. Gravity Cup	Binks	Gravity	Aluminum	No	No	OMX-70-K48
81-540	8 oz. Siphon Cup	Binks	Siphon	Aluminum	No	No	None
81-800	1 qt. Drip Free Cup	Binks	Siphon	Aluminum	No	No	None
81-810	1 qt. Drip Free Cup	Binks	Siphon	Aluminum & Non-Stick	No	No	None
81-820	1 qt. Drip Free Cup	Binks	Siphon	Stainless Steel	No	No	None
80-294	1 qt. Pressure Cup	Binks	Pressure	Aluminum	Yes	No	None
80-511	1 qt. Pressure Cup	Binks	Pressure	Stainless Steel	Yes	No	None
80-295	2 qt. Steadi-Grip	Binks	Pressure	Aluminum	Yes	No	None
80-600	2 qt. Steadi-Grip	Binks	Pressure	Aluminum	Yes	No	80-356
80-601	2 qt. Steadi-Grip	Binks	Pressure	Aluminum	Yes	Recip Agitator	80-356
80-651	2 qt. Steadi-Grip	Binks	Pressure	Aluminum	Yes	Rotary Agitator	80-356

DeKUPS™

by DeVilbiss

CUP SYSTEMS

Part No.	Description	Qty.
DPC-601	24 oz. Disposable Cup / Lid	32
DPC-602	9 oz. Disposable Cup / Lid	32
DPC-600	34 oz. Disposable Cup / Lid	32
DPC-606	24 oz. Reusable Sleeve / Lid	2
DPC-607	9 oz. Reusable Sleeve / Lid	2
DPC-608	34 oz. Reusable Sleeve / Lid	2
DPC-503-K24	3 oz. Vented Disposable Cup / Lid	24

DEMO KIT

Part No.	Description	Qty.
DPC-654	24 oz. Demo Trial Kit with Adapter, Reusable Sleeve, Disposable Cups, Plugs, Filters	1

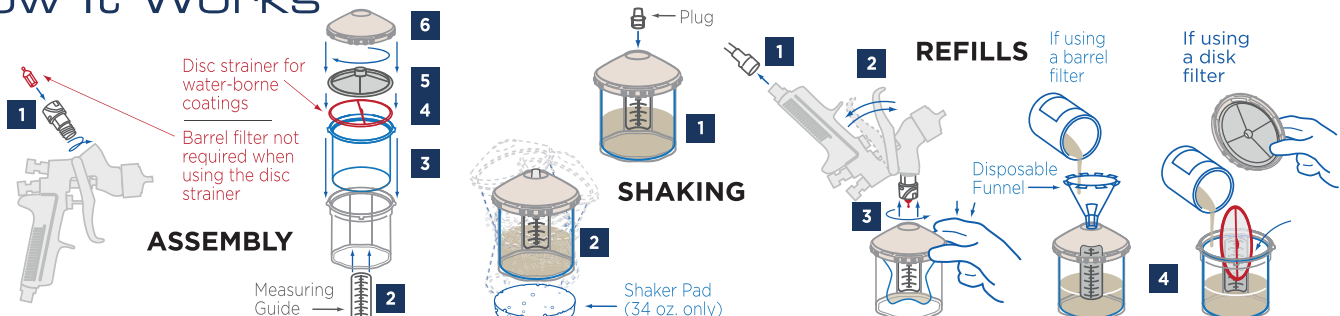
ADAPTERS

Part No.	Compatible Spray Gun	Qty.
DPC-31	Trophy, Compact, JGA, EXL, FLG, SV100, 95-G, Graco® XT	1
DPC-23	Trophy Touch Up, SRI, Cub, Compact Mini	1
DPC-10	SV50 Full Size, Graco Finex, SATA® NR2000, RP, Sata Jet 90 Series	1
DPC-11	SATA NR95, Iwata® LPH 400 and W400	1
DPC-77	Graco® AirPro	1
DPC-78	Kremlin, Iwata SuperNova, Iwata Air Guns, LPH300 and W300	1
DPC-500	Converter for 3M Adapters	1
DPC-502	SATA Mini Conversion Adapter	1
DPC-501	SATA 3000 / 4000	1
DPC-79-K1	Suction: Trophy Touch Up, Cub	1
DPC-69-K1	Suction Conversion Adapter	1
DPC-26	Accuspray® Adapter	1

ACCESSORIES

Part No.	Description	Qty.
DPC-60-K10	Measuring Guide 9 oz.	10
DPC-59-K10	Measuring Guide 24 oz.	10
DPC-61-K10	Measuring Guide 34 oz.	10
DPC-65-K24	Disk Filters 125 Micron 9 oz.	24
DPC-42-K24	Disk Filters 125 Micron 24 oz and 34 oz	24
DPC-67-K24	Disk Filters 200 Micron 9 oz.	24
DPC-66-K24	Disk Filters 200 Micron 24 oz. and 34 oz	24
DPC-27-K10	Barrel Filter - 200 Micron	10
DPC-17-K10	Barrel Filter - 300 Micron	10
DPC-14-K10	Barrel Filter - 600 Micron	10
DPC-22-K24	Disposable Funnels	24
DPC-6-K10	Orange Plugs	10
DPC-44	Cleaning Brush	1
DPC-8	Cleaning Bottle	1

How It Works



The DeKups® System is covered by U.S. Patent Nos. 6,820,824 and 7,374,111, owned by 3M Innovative Properties Co., additional U.S. Patent Nos. 7,380,680; 7,354,074; 7,353,964; 7,350,418; 7,344,040; 7,263,893; 7,165,732; 7,086,549.

Fluid Delivery: Pressure Feed Tanks

Zinc-Plated & Stainless Steel 2.8 gal. Pressure Tanks

Binks ASME code PT tanks are a great choice in a 2 gallon pressure tank when spraying up to 80 psi of fluid pressure.

- Choose 83C tanks for solvent-borne coatings
- Choose 83Z tanks for water-borne coatings

Air Regulation	Fluid Agitation	Zinc-Plated Throughout, Including Lid, Wetted Parts & Tank Shell	Zinc-Plated Tank Shell, Stainless Steel Lid & Wetted Parts
Single Reg	No Agitation	83C-210	83Z-210
Double Reg	No Agitation	83C-220	83Z-220
Single Reg	Std. Agitation (D)	83C-211	83Z-211
Double Reg	Std. Agitation (D)	83C-221	83Z-221
Disposable Liner	—	PT-78-K10 or K60	PT-78-K10 or K60
Head Gasket	—	PT-33-1	PT-33-1
Service Bulletin	—	SBBI-21-044	SBBI-21-043

NOTE: The air regulator(s) and gauge(s) are shipped inside the tank to prevent damage in shipping. Bottom outlet kits are not available for 83C or 83Z pressure tanks.

(D) =Direct Drive Agitator: Uses direct mount air motor and air adjusting valve.



w/ 2 Regulators
PART NO.: 83C-220



w/ Agitator (2 Regulators)
PART NO.: 83C-221

Galvanized Steel 2, 5, 10 and 15 Gallon Pressure Tanks

Binks 183G- ASME Code Tanks give you application flexibility for most solvent-borne applications.



All 183G Tanks Include Fill Port



2 gal.
PART NO.: 183G-210



5 gal.
PART NO.: 183G-523

ASME CODE GALVANIZED CARBON STEEL TANKS

Single Regulated	Double Regulated	Single Regulated with Extra Sensitive Regulator	Double Regulated with Extra Sensitive Regulator	Direct Drive Agitator	20:1 Gear Reduced Agitator	2 gal. Tank Part No.	5 gal. Tank Part No.	10 gal. Tank Part No.	15 gal. Tank Part No.
■						183G-200	183G-500	183G-1000	183G-1500
■				■		183G-210	183G-510	183G-1010	183G-1510
■					■	183G-211	—	—	—
						183G-213	183G-513	183G-1013	183G-1513
	■			■		183G-220	183G-520	183G-1020	183G-1520
	■					183G-221	—	—	—
	■				■	183G-223	183G-523	183G-1023	183G-1523
		■				183G-230	183G-530	183G-1030	183G-1530
		■		■		183G-231	—	—	—
		■			■	183G-233	183G-533	183G-1033	183G-1533
			■			183G-240	183G-540	183G-1040	183G-1540
			■	■		183G-241	—	—	—
			■		■	183G-243	183G-543	183G-1043	183G-1543

Fluid Delivery: Pressure Feed Tanks

Stainless Steel Pressure Tanks

Binks 183S- ASME Code Tanks give you application flexibility with our best chemical resistance. Suitable for water-borne coatings.

ASME CODE STAINLESS STEEL TANKS

Single Regulated	Double Regulated	Single Regulated with Extra Sensitive Regulator	Double Regulated with Extra Sensitive Regulator	Direct Drive Agitator	20:1 Gear Reduced Agitator	2 gal. Tank Part No.	5 gal. Tank Part No.	10 gal. Tank Part No.	15 gal. Tank Part No.
■						183S-200	183S-500	183S-1000	183S-1500
■				■		183S-210	183S-510	183S-1010	183S-1510
■					■	183S-211	—	—	—
	■					183S-213	183S-513	183S-1013	183S-1513
	■			■		183S-220	183S-520	183S-1020	183S-1520
	■				■	183S-221	—	—	—
	■					183S-223	183S-523	183S-1023	183S-1523
		■				183S-230	183S-530	183S-1030	183S-1530
		■		■		183S-231	—	—	—
		■			■	183S-233	183S-533	183S-1033	183S-1533
			■	■		183S-240	183S-540	183S-1040	183S-1540
			■			183S-241	—	—	—
			■		■	183S-243	183S-543	183S-1043	183S-1543



All 183S Tanks Include Fill Port



5 gal.
PART NO.: 183S-510

30 & 60 Gallon Tanks

Binks ASME code 30 and 60 gallon tanks are ideal for larger jobs such as line striping or supporting multiple guns. Choose galvanized units for most applications. Choose stainless steel fitted galvanized tanks for water-borne applications.

ASME CODE 30 & 60 GALLON TANKS

Single Regulated	20:1 Gear Reduced Agitator	30 Gallon Tank in Galvanized Steel	60 Gallon Tank in Galvanized Steel	30 Gallon Shell in Galvanized Steel (for a Stainless Steel Fitted Tank)	60 Gallon Shell in Galvanized Steel (for a Stainless Steel Fitted Tank)
■		83-5801	83-5701	83-5873 Plus 30 Gallon Liner (See Below)	83-5773 Plus 60 Gallon Liner (See Below)
■	■	83-5807	83-5707	83-5879 Plus 30 Gallon Liner (See Below)	83-5779 Plus 60 Gallon Liner (See Below)

30 & 60 GALLON TANK LINERS

Top Outlet	Bottom Outlet (Includes Bottom Outlet Kit)	30 Gallon SS Liner	60 Gallon SS Liner
■		83-1569	83-1581
	■	83-2230	83-2229



Bottom Outlet Kits for 183G- & 183S- ASME Code Tanks:

Bottom outlet kits include sturdy steel legs, mounting fasteners, fittings, and outlet pipe.

	Bottom Outlet Kit	Fluid Outlet if Using Bottom Outlet Kit
2 Gallon Tanks	183-3000	3/4" npt (m) or 3/4" nps (m)
5, 10 and 15 Gallon Tanks	183-3001	3/4" npt (m) or 3/4" nps (m)

183-3005: One leg plus fasteners. Order one to replace a damaged leg. Order three to raise a tank without bottom outlet plumbing.



Bottom Outlet Kit

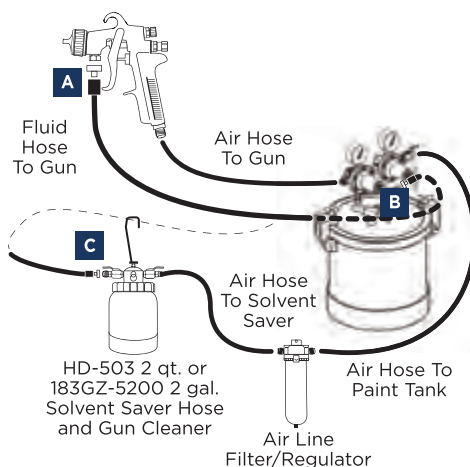
Solvent Saver



DeVilbiss
2 qt. Hose/Gun
Cleaner
Aluminum & Brass
Construction
PART NO.: HD-503



Binks
2 gal. Solvent Saver
Galvanized Steel,
Aluminum & Brass
Construction
PART NO.: 183GZ-5200



To Order QD Kit:

- (2) P-HC-4808-1 QD Body for fluid hose
- (3) P-HC-4482 QD Stem for gun, tank, solvent saver

HOW TO USE THE SOLVENT SAVER

To Flush Fluid Hose & Gun:

1. Shut off air pressure to tank - loosen tank lid
2. Loosen air cap on spray gun 2-3 turns
3. Hold rag over air cap, pull trigger, blow atomizing air backward through fluid line into tank
4. Remove QD "B" from tank and connect to QD stem "C" on solvent saver
5. Turn off atomizing air to the spray gun
6. Open ball valve on solvent saver while pulling trigger on spray gun
7. Spray solvent into a grounded waste container until it sprays clear
8. Air/solvent "chop" is cleaning fluid hose and spray gun
9. Connect QD "C" back onto QD Stem "B" on pressure tank
10. If desired, remove QD "A" and attach to QD "C" to flush solvent through pick-up tube of paint tank

Pressure Tank Liners



- Disposable anti-static polyethylene liners
- Seamless, vacuum-formed pail liners have a contoured lip that snaps over a pail's top bead to prevent leakage between the pail liner and the pail wall

Part No.	Size	Tank Series	Qty.	Liner Dia.	Liner Ht.	Liner Wt.	Shell Inside Dia.
Liners for 2 qt. SG-2 Cups							
80-356	2 qt.	80-350/80-351, 80-451, 80-600, 80-601, 80-651	12	6"	6 1/4"	1 oz.	5.9"
Liners for A.S.M.E. Stainless Steel Pressure Tanks							
6-238-60	2 gal.	83-155XX, 183S & 183G Series	60	9"	10 3/4"	3 oz.	9"
PT-78-K10	2.8 gal.	83Z-2XX, 83S-2XX, QMST-52XX*, 183S & 183G Series	10	9 1/4"	9 1/2"	3 oz.	9 1/2"
PT-78-K60	2.8 gal.	83Z-2XX, 83S-2XX, QMST-52XX*, 183S & 183G Series	60	9 1/4"	9 1/2"	3 oz.	9 1/2"
6-277	5 gal.	83-154XX, 183S & 183G Series	15	13 9/16"	15 3/4"	9.8 oz.	14"
6-278	10 gal.	83-153XX, 183S & 183G Series	12	14"	19 1/2"	10 oz.	14"
PTL-408-K20	9.8 gal.	83S-5XX, QMST-55XX*, 183S & 183G Series	20	13 9/16"	15 3/4"	9.8 oz.	14"
PTL-412-K8	11.8 gal.	83S-10XX, QMST-510XX*, 183S & 183G Series	8	13 1/2"	18 5/8"	10 oz.	14"
PTL-415-K10	19.8 gal.	83S-15XX, QMST-515XX*, 183S & 183G Series	10	13 11/16"	27 9/16"	16 oz.	14"
Liners for A.S.M.E. Galvanized (Zinc-Plated) Steel Pressure Tanks							
6-238-60	2 gal.	83-5XX, 183S & 183G Series	60	9"	10 3/4"	3 oz.	9"
PT-78-K10	2.8 gal.	83C-2XX, 83G-2XX, QMGT-52XX*, 183S & 183G Series	10	9 1/4"	9 1/2"	3 oz.	9 1/2"
PT-78-K60	2.8 gal.	83C-2XX, 83G-2XX, QMGT-52XX*, 183S & 183G Series	60	9 1/4"	9 1/2"	3 oz.	9 1/2"
6-239	5 gal.	83-54XX, 183S & 183G Series	24	11 15/16"	15 3/4"	6.3 oz.	12"
6-240	10 gal.	83-53XX, 183S & 183G Series	12	13 5/8"	21"	10.5 oz.	14"
PTL-408-K20	9.8 gal.	83G-5XX, QMST-55XX*, 183S & 183G Series	20	13 9/16"	15 3/4"	9.8 oz.	14"
PTL-412-K8	11.8 gal.	83G-10XX, QMGT-510XX*, 183S & 183G Series	8	13 1/2"	18 5/8"	10 oz.	14"
PTL-415-K10	19.8 gal.	83G-15XX, QMGT-515XX*, 183S & 183G Series	10	13 11/16"	27 9/16"	16 oz.	14"
Liners for PT Series Steel Pressure Tanks							
PT-78-K10	2.8 gal.	PT-Series*	10	9 1/4"	9 1/2"	3 oz.	9 1/2"
PT-78-K60	2.8 gal.	PT-Series*	60	9 1/4"	9 1/2"	3 oz.	9 1/2"
Liner for 5 gal. Pail							
PL-5GAL-K40	5 gal.	Pail	40	11 1/4"	13"	4.5 oz.	11 1/2"

Most common liners in Green * Note: QMGT, QMST & PT Series tanks are no longer available for purchase

Binks Gemini II Double Diaphragm Pumps

Binks Gemini II Diaphragm Pumps are the premier pumps for spraying, transferring, or circulating a variety of coatings. The pump design provides consistent spray patterns for high quality finish applications. The Gemini II pumps are rugged and designed to provide longer pump life.

- **Up to 38% More Fluid Delivery Per Stroke**
Longer equipment life and lower maintenance costs
- **Short Stroke Pump Specifically Designed for Spraying Applications**
Pulsation reduction is greater than competition
- **Customized Pump Packages**
Design a pump package for a specific application
- **Pump Outfits Available with Trophy Guns**
Trophy guns feature a new lightweight and ergonomic design
- **5-Year Limited Product Warranty**
The finishing industry's best warranty



Pail Mounted
1:1 Ratio 1/2" Acetal,
Dual Air Control, Filter,
Agitator, Siphon Hose
PART NO.: GEM2-P2D1D20



Drum Mounted
1:1 Ratio 1/2" Acetal,
Dual Air Control,
Agitator, Siphon Hose
PART NO.: GEM2-D2D0D10



Wall Mounted
1:1 Ratio 1/2" Acetal,
Dual Air Control,
Suction Hose Assembly
PART NO.: GEM2-W2D0040

Additional information for Gemini II Series Pumps and outfits available in catalog A41-108.

Binks Pogo Plus Low Pressure Pumps For High Volume Fluid Transfer & Spray Applications



Pogo Plus series, two-ball, double acting piston "stick" pumps are designed for the application and transfer of low-medium viscosity fluids. Models are available in Stainless Steel with either PTFE or UHMWE packings and are compatible with a wide variety of materials including water or solvent-borne paints and adhesives and most solvents. Pogo Plus pumps have a 4:1 ratio and are available with maximum pressure ratings of 290 psi or 500 psi.

- **Patented Air Motor Design**
Utilizes AX55 air motor to provide quick changeover and reduced pulsation
- **Durable Pump Design**
Reduces maintenance cost
- **Customized Pump Packages**
Design a pump package for a specific application
- **Pump Outfit Available with Trophy Gun**
Trophy guns feature a new lightweight and ergonomic design
- **5-Year Limited Product Warranty**
The finishing industry's best warranty



SPRAY FINISHING OUTFITS

Outfit	98-3063	98-3062
Pump	PX1304-5U	PX1304-5U
Gun	Trophy Conventional 2465-18CN-11SO	2100 66SS x 66SD-3
Air Control	41-28272	41-28272
Air Hose 25 ft.	71-4803	71-4803
Fluid Hose 25 ft.	71-3303	71-3303
Drum Bung Adaptor	41-28331	41-28331

POGO PLUS PUMP PERFORMANCE

	PX1304-5U	PX1304-5P	PX1304-8U	PX1304-8P
Pressure Ratio	4:1	4:1	4:1	4:1
Air Inlet Pressure (Bar)	0-72.5 psi (5)	0-72.5 psi (5)	0-116 psi (8)	0-116 psi (8)
Fluid Pressure (Bar)	0-290 psi (20)	0-290 psi (20)	0-500 psi (34)	0-500 psi (34)
Cycles Per Gallon	47	47	47	47
Displacement Per Cycle	2.7 (81 cc)	2.7 (81 cc)	2.7 (81 cc)	2.7 (81 cc)
Flow @ 60 Cycles/Min	1.3 gal. (4.91l/m)	1.3 gal. (4.91l/m)	1.3 gal. (4.91l/m)	1.3 gal. (4.91l/m)
Packing Material	UHMW	PTFE	UHMW	PTFE

Fluid Delivery: Air Assisted Airless Medium Pressure Pumps



Binks MX™ Series Piston Pumps

- 12:1 and 32:1 ratio packages
- .4 GPM fluid delivery
- Ideal for thin to medium viscosity coatings
- Designed for single gun applications
- Cart, tripod or wall mount options
- Complete packages include gun, hose, air controls, filter and siphon hose

STANDARD OUTFITS

Model	GPM at 60 cycles/min		FEATURES											
			Ratio	UHMWPE U-Cup Seal	PTFE/UHMWPE Packings	AA1600M Spray Gun with 114-01310 Flat Tip	AA1600M Spray Gun with 114-01310 Twist Tip	AA400M Spray Gun with 114-01310 Flat Tip	AA400M Spray Gun with 114-01310 Twist Tip	Air Assist Airless Air Control	Cart Mount	Tripod Mount	Wall Mount	Stainless Steel Filter
MX412UC-EDCIS25	0.4	12:1	■	■	■	■	■	■	■	■	■	■	■	■
MX412UC-FDCIS25	0.4	12:1	■	■	■	■	■	■	■	■	■	■	■	■
MX412UC-EDTIS25	0.4	12:1	■	■	■	■	■	■	■	■	■	■	■	■
MX412UC-FDTIS25	0.4	12:1	■	■	■	■	■	■	■	■	■	■	■	■
MX412UC-EDWIS25	0.4	12:1	■	■	■	■	■	■	■	■	■	■	■	■
MX412UC-FDWIS25	0.4	12:1	■	■	■	■	■	■	■	■	■	■	■	■
MX432PU-GDCIS25	0.4	32:1	■	■	■	■	■	■	■	■	■	■	■	■
MX432PU-HDCIS25	0.4	32:1	■	■	■	■	■	■	■	■	■	■	■	■
MX432PU-GDTIS25	0.4	32:1	■	■	■	■	■	■	■	■	■	■	■	■
MX432PU-HDTIS25	0.4	32:1	■	■	■	■	■	■	■	■	■	■	■	■
MX432PU-GDWIS25	0.4	32:1	■	■	■	■	■	■	■	■	■	■	■	■
MX432PU-HDWIS25	0.4	32:1	■	■	■	■	■	■	■	■	■	■	■	■

SPECIAL ORDERING OPTIONS

Model	GPM at 60 cycles/min		FEATURES					
			Ratio	UHMWPE U-Cup Seal	PTFE/UHMWPE Packings	Air Assist Airless Air Control	Cart Mount	Wall Mount
MX412UC-ODC0000	0.4	12:1	■	■	■	■	■	■
MX412UC-ODT0000	0.4	12:1	■	■	■	■	■	■
MX412UC-ODW0000	0.4	12:1	■	■	■	■	■	■
MX412UC	0.4	12:1	■	■	■	■	■	■
MX412PU-ODW0000	0.4	12:1	■	■	■	■	■	■
MX412PU	0.4	12:1	■	■	■	■	■	■
MX432PU-ODC0000	0.4	32:1	■	■	■	■	■	■
MX432PU-ODT000	0.4	32:1	■	■	■	■	■	■
MX432PU-ODW0000	0.4	32:1	■	■	■	■	■	■
MX432PU	0.4	32:1	■	■	■	■	■	■
MX432UC-ODW0000	0.4	32:1	■	■	■	■	■	■
MX432UC	0.4	32:1	■	■	■	■	■	■

Shown:
Wall Mounted



Shown:
Tripod Mounted



Shown:
Cart Mounted



Fluid Delivery: Air Assisted Airless Medium Pressure Pumps

Binks MX™ Series Piston Pumps

- 12:1 and 31:1 ratio packages
- 1.2 GPM fluid delivery
- Ideal for thin to medium viscosity coatings
- Supports 1-2 guns in air assisted airless applications
- Cart or wall mount options
- Complete packages include gun, hose, air controls, filter and siphon hose



STANDARD OUTFITS

STANDARD OUTFITS			FEATURES												
			GPM at 60 cycles/min	Ratio	UHMWPE	PTFE/UHMWPE Seal	AA1600M Spray Gun with 114-01310 Flat Tip	AA1600M Spray Gun with 114-01310 Twist Tip	AA4400M Spray Gun with 114-01310 Flat Tip	AA4400M Spray Gun with 114-01310 Twist Tip	Air Assist Airless Air Control	Cart Mount	Wall Mount	Stainless Steel Filter	5 Gallon Siphon
Model															
MX1212UC-EDCIS25	1.2	12:1	■		■				■	■		■	■	■	
MX1212UC-FDCIS25	1.2	12:1	■			■			■	■		■	■	■	
MX1212UC-EDWIS25	1.2	12:1	■		■				■		■	■	■	■	
MX1212UC-FDWIS25	1.2	12:1	■			■			■		■	■	■	■	
MX1231PU-GDCIS25	1.2	31:1		■			■		■	■		■	■	■	
MX1231PU-HDCIS25	1.2	31:1		■				■	■	■		■	■	■	
MX1231PU-GDWIS25	1.2	31:1		■			■		■		■	■	■	■	
MX1231PU-HDWIS25	1.2	31:1		■				■	■		■	■	■	■	

SPECIAL ORDERING OPTIONS

SPECIAL ORDERING OPTIONS

Model	FEATURES						
	GPM at 60 cycles/min	Ratio	UHMWPE	PTFE/UHMWPE Seal	Air Assist Airless Air Control	Cart Mount	Wall Mount
MX1212UC-0DC0000	1.2	12:1	■		■	■	
MX1212UC-0DW0000	1.2	12:1	■		■		
MX1212UC	1.2	12:1	■		■		■
MX1212PU-0DW0000	1.2	12:1		■			
MX1212PU	1.2	12:1		■	■		■
MX1231PU-0DC0000	1.2	31:1		■	■	■	
MX1231PU-0DW0000	1.2	31:1		■	■		
MX1231PU	1.2	31:1		■	■		■
MX1231UC-0DW0000	1.2	31:1	■				
MX1231UC	1.2	31:1	■		■		■

1. Large ex quick ch spray op
2. Magnetic (patent p dump air air motor over quic
3. 1.2 GPM (supports
4. Self adj longer lif

1. Large exhaust valves allow quick changeover for smooth spray operation
2. Magnetic Detent spool valve (patent pending) and quick dump air valves enable air motor to switch over quickly
3. 1.2 GPM @ 60 cycles/min supports 1-2 gun spraying
4. Self adjusting packings for longer life
5. Balanced, stepped rod fluid section with hard chromed surface minimizes wear and maximizes time-between-rebuilds



Fluid Delivery: Airless & Air Assisted Airless High Pressure Pumps

Binks MX™ Series Heavy Duty Airless & Air Assisted Airless Spray Outfits

Binks MX Pumps are a completely new design in air operated pump technology using a patented magnetic detent to provide fast changeover of the piston stroke with virtually no pulsation. The result is more speed with a more consistent finish. The MX pumps are available in ratios of 36:1, 42:1, 60:1 and 70:1 with fluid deliveries of 3.0 or 3.5 GPM.

TYPICAL APPLICATIONS:

Corrosion Protection For -

- Steel fabrications and structures
- Marine and ship building
- Pipe
- Off road vehicles
- Storage tanks
- Trailer and railcar manufacturers



Mounting Setups:

- Bare Pump (no mount provided)
- Cart Mount (shown at left)
- Wall Mount

1. Air controls included for pump and/or air assist spray gun applications
2. Air motor silencer for quiet operation
3. "No-Ice" air motor design keeps the pump from icing up
4. Patented anti-stall magnetic detent technology with quick exhaust valves feature low to no ice operation and uninterrupted production
5. Self adjusting packings increase life with even wear
6. Flat free tires require no maintenance

MX™ Series Ordering Information

MX3560 60:1 pump carbon steel lower fluid section with PTFE/UHMW packings sold with a 100 mesh filter, 5 gal. siphon kit, Airless 7500 gun w/ fluid tube no tip*, 50' airless hose with 5' whip hose.

*Specify tip separately when ordering

ORDERING SYSTEM FOR AIRLESS OUTFITS

	A	B	C	D	E	F	G	H		
MX	35	60	PU-	C	A	C	5	S	1	2
A	OUTPUT				E	FILTER				
30	=	3.0 GPM			1	=	100 Mesh			
35	=	3.5 GPM			3	=	30 Mesh			
B	RATIO				5	=	50 Mesh			
36	=	36:1			7	=	70 Mesh			
42	=	42:1			F	SIPHON				
60	=	60:1			0	=	None			
70	=	70:1			S	=	5 Gallon			
C	MATERIAL				T	=	55 Gallon			
C	=	Carbon Steel			G	GUN				
S	=	Stainless Steel			0	=	No Gun			
D	MOUNTING				1	=	Airless 75 0811-7500-1			
C	=	Cart			H	HOSE				
W	=	Wall			0	=	None			
					2	=	25 Feet			
					5	=	50 Feet			

AIR ASSISTED AIRLESS OUTFITS

98-3230 Single Gun Outfit	Outfit Components	98-3231 2 Gun Outfit
1	MX3536PU-C4C5500 36:1 Ratio, 3.5 GPM Pump, Carbon Steel Fluid Section, Cart Mount, with 50 Mesh Fluid Filter and 5 Gal. Siphon Tube	1
1	53' Air Tubing for Atomizing Air	2
1	50' High Pressure Fluid Hose (1/4" I.D. / 4,000 psi)	2
1	3' High Pressure Whip Hose (1/8" I.D. / 5,000 psi)	2
1	Air Controls for 1 or 2 Guns	2
1	0909-4400-HT0000 AA4400M Air Assisted Airless Spray Gun with HVLP Air Cap and Twist Tip Guard (Tip Not Included - Order Separately)	2

Note: Twist tip not included - order separately

7. Heavy duty cart with lower "grab" handles for easy lifting
8. Carbon or stainless steel housing with ceramic coated step rod design reduces friction in the pump rod movement and is proven tough to increase packing life
9. Large 1 1/2" "knock off" fluid inlet for faster pump assembly and disassembly in the field

MX™ Series Accessories, Spares & Kits

Binks MX Accessories and Spares	MX3042	MX3536	MX3560	MX3070
Airless 75 Gun with Stainless Steel Fluid Tube		0811-7500-1		
Airless 75 Gun Direct Connect		0811-7500-2		
Airless 75 Gun Direct Connect Large Passage		0811-7500-3		
Airless 75M Gun with 3/8" Fluid Opening		0811-7500-4		
Cart Assembly	41-28280-200		41-28280-MX	
Wall Bracket Assembly	104116		104095	
Silencer		192509		
2 or 3 Gun Outlet Kit		41-28294		
Binks Micro-Swivel 1/4" NPS (F) to 1/4" NPS (M) (7,550 psi)		72-2332		
Binks Micro-Swivel 1/4" NPS (F) to 3/8" NPS (M) (7,550 psi)		72-2333		
High Pressure Filter Elements	MX3042	MX3536	MX3560	MX3070
30 Mesh		0114-014917		
50 Mesh		0114-014886		
70 Mesh		0114-014884		
100 Mesh		0114-014883		
Air Motor Spares Kit	MX3042	MX3536	MX3560	MX3070
Seal Kit	250703		250645	
Cylinder Seal Kit	250702		250648	
Hardware Kit	250701		250650	
Air Valve Repair Kit		250649		
Exhaust Seal Kit		250651		
Fluid Section Repair Kit	MX3042	MX3536	MX3560	MX3070
Fluid Section Rebuild Kit	250665	250661	250661	250665
Fluid Section Seal Kit	250663	250659	250659	250663

Air Assist Airless packages are available by contacting Binks Customer Service.

Airless Fluid Hose Assemblies

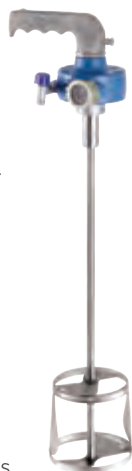


Part No.	Size	Max. Working Pressure	Tube Material	Connection Type	Threads	Connection Material
Airless Paint Hose (Conductive)						
71-4830	1/4" i.d. x 25'	4,000 psi	Nylon	Permanent w/ Spring Guards	1/4" nps (f)	Steel Plated
71-4831	1/4" i.d. x 50'	4,000 psi	Nylon	Permanent w/ Spring Guards	1/4" nps (f)	Steel Plated
71-4840	1/4" i.d. x 25'	10,000 psi	Nylon	Permanent w/ Spring Guards	1/4" nps (f)	Steel Plated
71-4841	1/4" i.d. x 50'	10,000 psi	Nylon	Permanent w/ Spring Guards	1/4" nps (f)	Steel Plated
71-4850	3/8" i.d. x 25'	3,500 psi	Nylon	Permanent w/ Spring Guards	3/8" nps (f)	Steel Plated
71-4851	3/8" i.d. x 50'	3,500 psi	Nylon	Permanent w/ Spring Guards	3/8" nps (f)	Steel Plated
71-4860	3/8" i.d. x 25'	8,000 psi	Nylon	Permanent w/ Spring Guards	3/8" nps (f)	Steel Plated
71-4861	3/8" i.d. x 50'	8,000 psi	Nylon	Permanent w/ Spring Guards	3/8" nps (f)	Steel Plated
Whip-End Fluid Hose Assemblies						
71-8360	3/16" i.d. x 30"	3,000 psi	Nylon	Permanent w/ Spring Guards	1/4" nps (f) x 1/4" npt (m)	Steel Plated
71-6844	1/8" i.d. x 3'	5,000 psi	Nylon	Permanent w/ Spring Guards	1/4" nps (f) x 1/4" npt (m)	Steel Plated
Air Assist Airless Fluid Hose Assemblies						
71-4992	1/8" i.d. x 15'	4,000 psi	Nylon	Permanent w/ Spring Guards	1/4" npt (f)	Stainless Steel
71-4993	1/8" i.d. x 25'	5,000 psi	Nylon	Permanent w/ Spring Guards	1/4" npt (f)	Stainless Steel
71-4995	3/16" i.d. x 25'	1,900 psi	Nylon	Permanent w/ Spring Guards	1/4" npt (f)	Stainless Steel
1/4" i.d. Air Tubing (Air Assist Air Supply To Gun)						
71-4803	1/4" i.d. x 28'	100 psi	Poly-Urethane (red)	None*	—	—
71-4804	1/4" i.d. x 53'	100 psi	Poly-Urethane (red)	None*	—	—

*See page 5-11 Catalog A28-100R Accessories Guide for connections

Binks Quick-Mixers for Container Sizes of 5 to 55 gallon

- Designed for standard and for extra heavy industrial uses
- All Purpose:** *Unsurpassed for paint, resins, chemicals, and slurries*
- High Performance:** *Explosion-proof direct drive*
- Air Motors:** *1/2 HP (standard); Implosion-Type*
- High shear mixer blades thoroughly mix 5 gallons of paint in less than 60 seconds
- Rugged:** *Stainless steel shaft and impeller*
- Specially welded stress points makes mixer virtually unbreakable



Model No. Complete:	149-873 (1/2 HP)	149-874 (1/2 HP)
Model No. Stainless Steel Mixer Only:	149-365 (shown)	149-693
Container Size:	5 and 10 gallons	55 gallons
Shaft Length x Diameter:	21 in. x 1/2 in.	40 in. x 1/2 in.
Impeller Diameter:	5 in.	5 in.
Shaft Length:	21 in.	40 in.
Shipping Weight:	9 lbs.	10 lbs.
Ref. Part Sheet:	77-2826	77-2826

Binks Fluid Heaters

Working capacity to 5000 psi and with adjustable thermostatic control from 60° to 250°F.



PART NO.: 830000

Part No.	Description
830000	120 vac (16.6 amps)
830001	240 vac (8.33 amps)

Binks Agitators

5 gal. pail-mounted direct drive agitator fitted with zinc plated chromate cover.

PART NO.: 31-425



See Catalog A41-114 for the full line of Binks Agitators

Binks Prospector™ Tank Strainers & Pail Strainers



Part No.	Description	Mesh Size	Pail Size
Binks Prospector™ Tank Strainers			
PTS-2Gal-K20-200	2-gal. Tank Strainer - 200 Micron	65 Wire Mesh	2-gal.
PTS-2Gal-K20-400	2-gal. Tank Strainer - 400 Micron	37 Wire Mesh	2-gal.
PTS-2Gal-K20-600	2-gal. Tank Strainer - 600 Micron	28 Wire Mesh	2-gal.
PTS-5Gal-K20-200	Tank Strainer - 200 Micron	65 Wire Mesh	5-gal., 10-gal. or 15-gal.
PTS-5Gal-K20-400	Tank Strainer - 400 Micron	37 Wire Mesh	5-gal., 10-gal. or 15-gal.
PTS-5Gal-K20-600	Tank Strainer - 600 Micron	28 Wire Mesh	5-gal., 10-gal. or 15-gal.
Binks Prospector™ Pail Strainers			
PS-5Gal-K20-200	5-gal. Pail Strainer - 200 Micron	65 Wire Mesh	5-gal.
PS-5Gal-K20-400	5-gal. Pail Strainer - 400 Micron	37 Wire Mesh	5-gal.
PS-5Gal-K20-600	5-gal. Pail Strainer - 600 Micron	28 Wire Mesh	5-gal.

Binks "Strain-It" Cup Strainer



Part No.	Description	Mesh Size - Color
2Gal-81-82	Super Fine: Removes Lint and Particles	145 Wire Mesh - White
81-83	Fine: For Primers and More Viscous Materials	100 Wire Mesh - Blue
81-84	Medium: For Heavy Materials	80 Wire Mesh - Red

Binks Fluid Pick-Up Tube Paint Strainer



Part No.	Description	Qty	Shipping Weight*
149-278	Fluid Pick-Up Tube Paint Strainer 50 Mesh, Brass with Polyethylene Gasket	10/ Box	1.00 lbs.

* Shipping weights approximate

Binks Low Pressure In-Line Fluid Filter

Nickel plated body and stainless steel element screen for solvent or waterborne materials.



Part No.	Description	S.S. Element Screen
83-2922	50 mesh, 297 microns	83-2089
83-2923	80 mesh, 177 microns	83-2596
83-2924	100 mesh, 149 microns	83-1256
83-2925	150 mesh, 96 microns	83-2405
83-2926	200 mesh, 74 microns	83-2706



PUMP RATIO 37:1 - 2960 PSI (204 BAR)

Ideally suited for Vinyl Ester applications requiring .5% to 3.5% catalyst ratios

Binks Vinyl Ester Spray Finishing Outfit - 105-1401

The Binks B8-D 37:1 ratio cart mount system is a complete pumping system which includes a Binks Century Vinyl Ester spray gun, cart, 50 ft. each of air, catalyst and material hose assemblies and a 55 gallon siphon hose assembly.

Features & Benefits:

- External mix Binks Century HVLP Vinyl Ester spray gun eliminates flushing
- HVLP complies with many environmental regulations and delivers excellent transfer efficiency
- Dual acting trigger lock
- Catalyst and resin pump are coupled, which assures accurate volumetric ratio
- Catalyst pump meters catalyst from ratios of 0.5% to 3.5%
- Catalyst pump ratio bar has etched markings that do not dissolve with solvent exposure
- B8-D 37:1 - 2960 psi pump is capable of supplying 3.4 GPM (12.9 l/m) at 60 cycles/min. of resin

B8-D VINYL ESTER PUMP SPECIFICATIONS

- **Air Motor:** B8
- **Pump Ratio:** 37:1
- **Main Air Inlet Size:** 1/2" nps (m)
- **Spray Gun:** Binks Century Vinyl Ester HVLP Spray Gun (102-2545)
- **Max Air Input Pressure:** 80 psi (5.5 bar)
- **Max Fluid Pressure:** 2960 psi (204 bar)
- **Air Req'd. @20 Cycles Per Min. @ 80 psi:** 37 cfm (140 l/m)
- **Resin Pump Wetted Parts:** Stainless Steel, Tungsten Carbide, Chrome Plated Steel, PTFE, UHMWPE
- **Catalyst Pump Wetted Parts:** Stainless Steel, Silicone Rubber, PTFE

COMPONENT PART SHEETS

- | | |
|---|----------------------------|
| • 77-2897 - Vinyl Ester System | • 77-2213 - B8 Air Motor |
| • 77-2470 - Flow Meter | • 77-2728 - Catalyst Pump |
| • 77-2892 - Fluid Section (101-9286) | • 77-2902 - Small Cart |
| • 77-2835 - Catalyst Bottle | • 77-2881 - Air Control |
| • 77-2882 - Pulse Bottle | • 77-5300 - Safety Booklet |
| • 77-2520 - Binks Century Vinyl Ester Spray Gun | |



The Binks vinyl ester system features the highly acclaimed Binks Century HVLP Vinyl Ester spray gun.

SYSTEM COMPONENT LIST

Part No.	Description
105-1401	Binks B8-D 37:1 Cart Mount Outfit
102-2545	Century Vinyl Ester Spray Gun (Less Tip)
108-9 Series	Tip Assembly - Order Separately (Ref. Part Sheet 77-2520 for 108-9 Tip Sizes)
103-1789	B8-D Pump Assembly
103-1733	Air Control Assembly
103-1068	Siphon Kit 1"- 55 gallon
102-3030	Catalyst Hose 50 ft.
71-1206	Air Hose 50 ft.
71-8425	Material Hose 50 ft.
41-28050	Small Cart Assembly

DeVilbiss has what you need to make your finishes nothing but the best. By adding air filtration to your finishing equipment, you are ensuring that contaminants such as dirt, oil and water won't appear in your finish because of dirty air.

CleanAir Centrifugal Filter-Regulator Units

Excellent for eliminating moisture and dirt from an air supply

DeVilbiss CleanAir centrifugal units supply cleaner, drier air to each spray gun in a system. This cleaner air can also increase the life of pneumatic tools.

- Filters out water and oil aerosols and dirt particulates to 5 microns
- Ideal for most spray applications, air tools and equipment
- Water droplets collected in the bowl are removed by an automatic drain (standard feature) — no need to manually drain



CENTRIFUGAL AIR FILTER UNITS

Part No.	HAF-502	HAF-503	HAF-505
Filtering Capacity	5 micron	5 micron	.01 micron
Flow Rate (CFM)	100 @ 90 psi	150 @ 90 psi	55 @ 90 psi
Max. Inlet Pressure	150 psi / 10.3 bar	150 psi / 10.3 bar	150 psi / 10.3 bar
Max. Operating Temp.	150°F / 65.6°C	150°F / 65.6°C	150°F / 65.6°C
Inlet Port Size	1/2" NPT (F)	3/4" NPT (F)	1/2" NPT (F)
Outlet Port Size	1/2" NPT (F)	3/4" NPT (F)	1/2" NPT (F)
Bowl Capacity	17 oz.	34 oz.	17 oz.
Shipping Weight	1 lb. 7 oz.	3 lbs. 1 oz.	1 lb. 8 oz.
Auto Drain	Std.	Std.	Std.
Service Bulletin	SB-6-146	SB-6-148	SB-6-152

CENTRIFUGAL FILTER-REGULATOR UNITS

Part No.	HFRL-508	HFRL-509	HFRL-511
Filtering Capacity	5 micron	5 micron	5 micron
Flow Rate (CFM)	60+	80+	120+
Max. Inlet Pressure	150 psi / 10.3 bar	150 psi / 10.3 bar	150 psi / 10.3 bar
Regulated Pressure Range (psi)	0 - 125	0 - 125	0 - 125
Max. Operating Temp.	150°F / 65.6°C	150°F / 65.6°C	150°F / 65.6°C
Inlet Port Size	1/2" npt (f)	3/4" npt (f)	3/4" npt (f)
Regulated Outlets (w/ ball valve)	(1) 1/4" nps (m)	(2) 1/4" nps (m)	(4) 1/4" nps (m)
Non-Regulated Outlets (w/ ball valve)	(1) 1/4" nps (m)	(1) 1/4" nps (m)	(1) 1/4" nps (m)
Bowl Capacity	17 oz.	34 oz.	34 oz.
Air Filter Included	HAF-502	HAF-503	HAF-503
Quantity of Air Regulators/Model	(1) HAR-507	(1) HAR-507	(2) HAR-507
Air Gauges (0 - 100 psi)	1	1	2
Air Gauges (0 - 160 psi)	1	1	1
Shipping Weight	9 lbs.	15 lbs.	18 lbs.
Service Bulletin	SB-6-146	SB-6-148	SB-6-148

FRC-650 All-In-One

filter, regulator and coalescer

A UNIQUE PRODUCT IN THE FINISHING MARKET

- FRC-650 All-In-One combines a filter, regulator and coalescer for shop air into one compact unit
- Four 1/4" nps (m) ball valves with unrestricted air passages, (three regulated plus one unregulated outlet)
- Automatic drains at each stage eliminate water build-up — no need to manually drain

FRC-650 Specifications:

- **Type of Air Regulation:** Diaphragm
- **Air Inlet Port Size:** 1/2" Pipe Thread-(1)
- **Air Outlet Port Size:** 1/4" nps (m)-(4)
- **Regulated Air Outlets:** 3
- **Unregulated Air Outlets:** 1
- **Filtered Line Air Inlet:** 1
- **Max. Working Temperature:** 170°F / 80°C
- **Max. Air Inlet Pressure:** 175 psi (12.3 kgf/cm²)
- **Regulated Outlet Pressure:** 0 -125 psi (0 - 8.8 kgf/cm²)
- **Flow Rate:** 100 cfm
- **First Stage Filtering Capacity:** 5 micron
- **Second Stage Filtering Capacity:** 1 micron
- **Bowl and Body Construction:** Aluminum
- **Drain:** Automatic
- **Service Bulletin:** SB-6-377



CleanAir Three-Stage Desiccant Unit

Provides the ultimate in clean dry air filter

- Ideally suited for low to medium production
- DAD-500 air-drying system includes three filtering units, as well as a wall mount bracket and desiccant filter change indicator



- Centrifugal and coalescer units include automatic bowl drain (standard feature) — no need to manually drain
- Coalescer filter includes filter change indicator
- Desiccant filter includes sight glass indicator (Changes color when desiccant needs replacement)

DAD-500* DESICCANT AIR DRYING SYSTEM

Desiccant System Units	DAD-500 Air Drying System*
Air Inlet	1/2" NPT (F)
Air Outlet	1/2" NPT (F)
Max. Operating Pressure (psi)	150
Replacement Filters/Desiccant	DAD-1"
Service Bulletin	SB-6-156
Air Flow Capacity (cfm)	25

*Includes HAF-502, HAF-505 and HAR-507 *Shipping Weight Approx. 10 lbs.

Low Pressure Air & Fluid Hose & Connections

Hose, Connections & Assemblies

Sizes Available		Bulk Hose Number	Maximum Working Pressure	Bend Radius	Std. Reel Length in Ft. 1 Piece Reels	Approx. Shipping Weight Based on Ft. Per Reel	Hose Weight Per 100 Ft.
i.d.	o.d.						

Premium Spray Finishing Air Bulk Hose Chart - Smooth Cover

1/4"	1/2"	71-10000	250 psi	2 3/4"	500	50 lbs.	10 lbs.
5/16"	5/8"	71-11000	250 psi	3"	500	87 lbs.	16.2 lbs.
3/8"	11/16"	71-12000	250 psi	3 1/2"	500	96 lbs.	18 lbs.
1/2"	7/8"	71-13000	250 psi	5"	300	86 lbs.	26.8 lbs.
3/4"	1 1/8"	71-14000	250 psi	6"	300	112 lbs.	35 lbs.

Fluidall™ Fluid Bulk Hose Chart (Nylon Lined, Max. Versatility) - Smooth Cover

1/4"	1/2"	71-280	500 psi	3"	500	43 lbs.	8 lbs.
3/8"	11/16"	71-282	500 psi	3 1/2"	500	83 lbs.	15 lbs.
1/2"	7/8"	71-283	750 psi	5"	300	74 lbs.	22 lbs.
3/4"	1 3/16"	71-284	750 psi	8"	300	118 lbs.	36 lbs.
1"	1 1/2"	71-285	750 psi	12"	300	168 lbs.	53 lbs.



Type A. Plated Brass



Type B. Plated Brass



Type C. Plated Brass

CONNECTIONS FOR PREMIUM & STATIC WIRE AIR HOSE

Hose Size i.d. o.d.	Bulk Hose No.	Connections		Compression Sleeve	Type
		Thread	Part No.		
1/4" 1/2"	71-10000	1/4" nps(f)	72-1303	HC-20-K10	A
		3/8" nps(f)	72-1306	HC-20-K10	A
		3/8" nps(f)s.s.	72-2143*	72-854-5	A
5/16" 5/8"	71-11000 71-20000	1/4" nps(f)	72-1317	HC-12-K10	A
		1/4" npt(m)	72-1478	HC-12-K10	B
		3/8" nps(f)	72-1320	HC-12-K10	A
3/8" 11/16"	71-12000	1/4" nps(f)	72-1325	HC-23-K10	A
		3/8" nps(f)	72-1328	HC-23-K10	A
		3/8" nps(f)s.s.	72-2146*	72-854-5	A
1/2" 7/8"	71-13000	3/8" nps(f)	72-1333	HC-33	A
		1/2" nps(f)	72-1334	HC-33	A
		1/2" nps(f)	72-9541*	—	C
3/4" 1 3/16"	71-14000	3/4" nps(f)	72-1336'	—	C
		3/4" nps(f)	72-417'	—	C
		3/4" nps(f)	72-9551*	—	C
		3/4" nps(f)	72-1935	—	—

Ergoflex™ Air Hose Connections

3/8"	.646"	71-31000	1/4" nps(f)	72-2008	HC-12-K10	A
------	-------	----------	-------------	---------	-----------	---

*Push-Lok Connection *Stainless Steel Tailpiece

CONNECTIONS FOR FLUIDALL™ FLUID HOSE

Hose Size i.d. o.d.	Bulk Hose No.	Connections		Compression Sleeve	Type
		Thread	Part No.		
1/4" 1/2"	71-280	1/4" nps(f)	72-1303	HC-20-K10	A
		3/8" nps(f)	72-1306	HC-20-K10	A
		3/8" nps(f)s.s.	72-2143*	72-854-5	A
3/8" 11/16"	71-282	1/4" nps(f)	72-1325	HC-23-K10	A
		3/8" nps(f)	72-1328	HC-23-K10	A
		3/8" nps(f)s.s.	72-2146*	72-856-5	A
1/2" 7/8"	71-283	3/8" nps(f)	72-1333	HC-33	A
		1/2" nps(f)	72-1334	HC-33	A
		1/2" nps(f)	72-9541*	—	C
3/4" 1 3/16"	71-284	3/4" nps(f)	72-1336'	—	C
		3/4" nps(f)	72-417'	—	C
		3/4" nps(f)	72-9551*	—	C
		3/4" nps(f)	72-1935	—	—
1" 1 1/2"	71-285	1" nps(f)	72-418'	—	C
		1" nps(f)	72-956*	—	C
		1" nps(f)	72-1936	—	—

*Push-Lok Connection *Stainless Steel Tailpiece

1/4" I.D. AIR TUBING ASSEMBLIES (LOW PRESSURE - AIR ASSIST SUPPLY)

Part No.	Bulk Hose No.	Size	Max. Working Pressure	Tube Material	Connection Part No.	Threads	Connection Material
54-4989	54-4987	1/4" i.d. x 3/8" o.d. x 25 ft.	100 psi	Polyurethane (red)	None	n/a	n/a
71-4800	54-4987	1/4" i.d. x 3/8" o.d. x 35 ft.	100 psi	Polyurethane (red)	None	n/a	n/a
71-4801	54-4987	1/4" i.d. x 3/8" o.d. x 50 ft.	100 psi	Polyurethane (red)	None	n/a	n/a
71-4803	54-4987	1/4" i.d. x 3/8" o.d. x 28 ft.	100 psi	Polyurethane (red)	None	n/a	n/a
71-4991	54-4987	1/4" i.d. x 3/8" o.d. x 25 ft.	100 psi	Polyurethane (red)	1 ea 54-4976 Tubing Connector	1/4" nps(f)	Brass Plated
71-4804	54-4987	1/4" i.d. x 3/8" o.d. x 53 ft.	100 psi	Polyurethane (red)	None	n/a	n/a

Low Pressure Air & Fluid Hose Assemblies

Air Hose Assemblies

PREMIUM AIR HOSE ASSEMBLIES (LOW PRESSURE)

Part No.	Bulk Hose No.	Size	Max. Working Pressure	Tube Material	Connection Part No.	Threads	Connection Material
71-1101	71-10000	1/4" i.d. x 1/2" o.d. x 5 ft.	250 psi	E.P.D.M.	72-1303	1/4" nps (f)	Brass Plated
71-1105	71-10000	1/4" i.d. x 1/2" o.d. x 25 ft.	250 psi	E.P.D.M.	72-1303	1/4" nps (f)	Brass Plated
71-1106	71-10000	1/4" i.d. x 1/2" o.d. x 50 ft.	250 psi	E.P.D.M.	72-1303	1/4" nps (f)	Brass Plated
71-1201	71-11000	5/16" i.d. x 5/8" o.d. x 5 ft.	250 psi	E.P.D.M.	72-1317	1/4" nps (f)	Brass Plated
71-1203	71-11000	5/16" i.d. x 5/8" o.d. x 15 ft.	250 psi	E.P.D.M.	72-1317	1/4" nps (f)	Brass Plated
71-1205	71-11000	5/16" i.d. x 5/8" o.d. x 25 ft.	250 psi	E.P.D.M.	72-1317	1/4" nps (f)	Brass Plated
71-1206	71-11000	5/16" i.d. x 5/8" o.d. x 50 ft.	250 psi	E.P.D.M.	72-1317	1/4" nps (f)	Brass Plated
71-1209	71-11000	5/16" i.d. x 5/8" o.d. x 6 ft.	250 psi	E.P.D.M.	72-1317	1/4" nps (f)	Brass Plated
71-1355	71-12000	3/8" i.d. x 11/16" o.d. x 25 ft.	250 psi	E.P.D.M.	72-1325	1/4" nps (f)	Brass Plated
71-1356	71-12000	3/8" i.d. x 11/16" o.d. x 50 ft.	250 psi	E.P.D.M.	72-1325	1/4" nps (f)	Brass Plated

AIR HOSE ASSEMBLIES (GROUNDED WITH STATIC WIRE)

Part No.	Bulk Hose No.	Size	Max. Working Pressure	Tube Material	Connection Part No.	Threads	Connection Material
71-2803	71-20000	5/16" i.d. x 5/8" o.d. x 25 ft.	250 psi	E.P.D.M.	72-1317	1/4" nps (f)	Brass Plated
71-2810	71-20000	5/16" i.d. x 5/8" o.d. x 35 ft.	250 psi	E.P.D.M.	72-1317	1/4" nps (f)	Brass Plated
71-2804	71-20000	5/16" i.d. x 5/8" o.d. x 50 ft.	250 psi	E.P.D.M.	72-1317	1/4" nps (f)	Brass Plated

ERGOFLEX AIR HOSE ASSEMBLIES

Part No.	Bulk Hose No.	Size	Max. Working Pressure	Tube Material	Connection Part No.	Threads	Connection Material
71-31101	H-3670	.390 i.d. x .650 o.d. x 25 ft.	200 psi	E.P.D.M.	72-2008	1/4" nps (f)	Brass Plated
71-31103	H-3670	.390 i.d. x .650 o.d. x 6 ft.	200 psi	E.P.D.M.	72-2008	1/4" nps (f)	Brass Plated

Fluid Hose Assemblies

FLUIDALL™ HOSE ASSEMBLIES (LOW PRESSURE)

Part No.	Bulk Hose No.	Size	Max. Working Pressure	Tube Material	Connection Part No.	Threads	Connection Material
71-3260	71-280	1/4" i.d. x 1/2" o.d. x 5 ft.	500 psi	Nylon	72-1303	1/4" nps (f)	Brass Plated
71-3263	71-280	1/4" i.d. x 1/2" o.d. x 25 ft.	500 psi	Nylon	72-1303	1/4" nps (f)	Brass Plated
71-3279	71-280	1/4" i.d. x 1/2" o.d. x 9"	500 psi	Nylon	72-1303	1/4" nps (f)	Brass Plated
71-3380	71-280	1/4" i.d. x 1/2" o.d. x 5 ft.	500 psi	Nylon	72-1306	3/8" nps (f)	Brass Plated
71-3383	71-280	1/4" i.d. x 1/2" o.d. x 25 ft.	500 psi	Nylon	72-1306	3/8" nps (f)	Brass Plated
71-3384	71-280	1/4" i.d. x 1/2" o.d. x 50 ft.	500 psi	Nylon	72-1306	3/8" nps (f)	Brass Plated
71-3390	71-280	1/4" i.d. x 1/2" o.d. x 35 ft.	500 psi	Nylon	72-1306	3/8" nps (f)	Brass Plated
71-3663	71-280	1/4" i.d. x 1/2" o.d. x 25 ft.	500 psi	Nylon	72-2143	3/8" nps (f)	Stainless Steel
71-3300	71-282	3/8" i.d. x 11/16" o.d. x 5 ft.	500 psi	Nylon	72-1328	3/8" nps (f)	Brass Plated
71-3303	71-282	3/8" i.d. x 11/16" o.d. x 25 ft.	500 psi	Nylon	72-1328	3/8" nps (f)	Brass Plated
71-3304	71-282	3/8" i.d. x 11/16" o.d. x 50 ft.	500 psi	Nylon	72-1328	3/8" nps (f)	Brass Plated
71-3313	71-282	3/8" i.d. x 11/16" o.d. x 17"	500 psi	Nylon	72-1328	3/8" nps (f)	Brass Plated
71-3400	71-283	1/2" i.d. x 7/8" o.d. x 5 ft.	750 psi	Nylon	72-1334	1/2" nps (f)	Brass Plated
71-3403	71-283	1/2" i.d. x 7/8" o.d. x 25 ft.	750 psi	Nylon	72-1334	1/2" nps (f)	Brass Plated
71-3404	71-283	1/2" i.d. x 7/8" o.d. x 50 ft.	750 psi	Nylon	72-1334	1/2" nps (f)	Brass Plated
71-3360	71-285	1" i.d. x 1 1/2" o.d. x 5 ft.	750 psi	Nylon	72-1936	1" nps (f)	Brass Plated
71-3361	71-285	1" i.d. x 1 1/2" o.d. x 10 ft.	750 psi	Nylon	72-1936	1" nps (f)	Brass Plated
71-3367	71-285	1" i.d. x 1 1/2" o.d. x 8 ft.	750 psi	Nylon	72-1936	1" nps (f)	Brass Plated

HOSE ASSEMBLY SETS (AIR & FLUID)

Part No.	Bulk Hose No.	Size	Max. Working Pressure	Tube Material	Connection Part No.	Threads	Connection Material
6-438	71-131	5/16" i.d. x 5/8" o.d. x 25 ft. 3/8" i.d. x 11/16" o.d. x 25 ft.	250 psi	Rubber	72-1317	1/4" nps (f) air	Brass Plated
	71-282	3/8" i.d. x 11/16" o.d. x 25 ft.	500 psi	Nylon	72-1328	3/8" nps (f) fluid	Brass Plated
KB-4006	71-131	5/16" i.d. x 5/8" o.d. x 5 ft. 9 in.	250 psi	Rubber	72-1317	1/4" nps (f) air	Brass Plated
	71-280	1/4" i.d. x 1/2" o.d. x 6 ft. 3 in.	500 psi	Nylon	72-1306	3/8" nps (f) fluid	Brass Plated

E.P.D.M. = Ethylene Propylene Diene Rubber

Paint Suits



DEVILBISS DISPOSABLE COVERALLS

Part No.	Qty	Size
803671	12/Case	Medium
803672	12/Case	Large
803673	12/Case	XL
803674	12/Case	3XL



DEVILBISS REUSABLE COVERALLS

Part No.	Qty	Size
803596	6/Case	Medium
803597	6/Case	Large
803598	6/Case	XL
803599	6/Case	3XL



DEVILBISS REUSABLE LAB COATS

Part No.	Qty	Size
803664	6/Case	Medium
803665	6/Case	Large
803666	6/Case	XL
803667	6/Case	3XL

Disposable Respirators



DEVILBISS CHAMPION™ DISPOSABLE CARTRIDGE RESPIRATORS

Part No.	Description	Package Qty
803611	DCR-502 Medium	1/bag-12/cs
803612	DCR-503 Large	1/bag-12/cs
803728	DCR-101-K3	3 Pair Replacement N95 Filters

Quick Disconnects



DEVILBISS HIGH FLOW AIR QUICK DISCONNECTS*

Part No.	Description	Package Qty
HC-1166	Hi-Flow QD Stem	1/4" npt (m)
HC-4419	Hi-Flow QD Stem	1/4" npt (f)
HC-4719	Hi-Flow QD Body	1/4" npt (m)
HC-4720	Hi-Flow QD Body	1/4" npt (f)

* Ideal for HVLP applications. See Accessories Catalog A28-100.

QUICK DISCONNECTS - BAYONETT STYLE (FLUID)

Part No.	Type	Description	Max. Working Pressure	Connection	Service Form
----------	------	-------------	-----------------------	------------	--------------

Binks Style

72-1804	Body (f)	Stainless Steel	500 psi	3/8" nps (m)	n/a
72-364	Stem (m)	Stainless Steel	500 psi	3/8" nps (f)	n/a

DeVilbiss Style

P-HC-4808-1	Body (f)	Aluminum	500 psi	3/8" nps (m)	SB-12-001
P-HC-4482	Stem (m)	Hardened Steel	500 psi	3/8" nps (f)	SB-12-001
HC-513-1	Body (f)	Stainless Steel	500 psi	3/8" nps (m)	SB-12-001
QDL-4808	Body (f)	Delrin/Stainless	500 psi	3/8" nps (m)	SB-12-001
HC-4691	Stem (m)	Stainless Steel	500 psi	3/8" nps (f) Swivel	SB-12-001

BINKS QUICK DISCONNECTS (FLUID - SOLVENT BASED)

Part No.	Type	Description	Max. Working Pressure	Connection	Service Form
72-885	Body (f)	Steel	250 psi	3/8" nps (m)	77-1759
72-887*	Stem (m)	Steel	250 psi	3/8" nps (f)	77-1759

* Replacement o-ring for stem: 20-3620-5 (5-pack Viton)

BINKS QUICK DISCONNECT ASSEMBLIES (FLUID - SOLVENT BASED)

Part No.	Description	Max. Working Pressure	Service Form
72-888	72-885 Body, 72-887 Stem*	250 psi	77-1759

* Replacement o-ring for stem: 20-3620-5 (5-pack Viton)

Cartridge Respirator



BINKS MILLENNIUM 3000

Part No.	Qty	Size
40-141	Small (Black)	1 Per Clam Shell
40-128	Medium (Silver)	1 Per Clam Shell
40-143	Large (Gold)	1 Per Clam Shell
40-1921*	Filter Cartridge, Organic Vapor	2 Per Blister Card, 10 Blister Cards/Cs
40-1924*	Pre-Filter, Oil Resistant	2 Per Blister Card, 10 Blister Cards/Cs
40-1925	Filter Cartridge Covers	2 Per Blister Card
40-1928	Tune-Up Kit	1 Per Poly Bag

* Filter cartridges and Pre-Filters are also available in cases of 10 blister card packs

See Binks and DeVilbiss complete line of spray booth performance and safety products catalog A29-55 online at binks.com

Spray Gun & Pump Lubricants / Fluids

SPRAY GUN & PUMP LUBRICANTS / FLUIDS

Part No.	Description
41-3134	Binks Pump Purge, Case of 12
41-4458-K	PTFE Grease (Magna Lube) .75 oz. Tube
44-285	14 oz. Grease Cartridge - Fits Standard Grease Guns
863009	Wet-Sol Upper Pump Packing Lubricant 1 Quart
42-175	Pump Packing Lubricant 1 Quart
863020	Air Line Lubricant 1 Quart
207-11155-1	Air Motor Lubricant 2 oz.
207-11155-2	Air Motor Lubricant 16 oz.
0114-009433	Pump Packing Lube For Solvent Based Materials, MX Series Pumps
0114-014871	Pump Packing Lube For Water Based Materials, MX Series Pumps
SSL-10-K12	DeVilbiss Gun Lube 12 ea 2 oz. Bottles
6-429	Binks Gunners Mate Gun Lube 20 ea 2 oz. Bottles



Filters



BINKS AF-HE SPRAY BOOTH EXHAUST FILTERS

Part No.	Description	Qty	Shipping Weight*
29-2189	3' x 30' AF-HE Blanket	1	21.00 lbs.



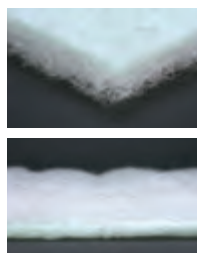
BINKS AF EXHAUST FILTERS

Part No.	Description	Qty	Size
29-2186-3	3' x 30' AF Paper Filter	3	63.00 lbs.



BINKS PAINT ARRESTOR EXHAUST FILTERS

Part No.	Description	Qty	Shipping Weight*
29-158	20" x 25" Pads	70/Case	16.00 lbs.
29-159	20" x 20" Pads	70/Case	13.00 lbs.



BINKS SPRAY BOOTH EXHAUST FILTERS

Part No.	Description	Size
29-3111	Receptor Filter Pad - 25/Case	20" x 20" x 2"
29-3112	Receptor Filter Pad - 25/Case	20" x 25" x 2"
29-3107	Receptor Filter Blanket	36" x 50' x 2"
29-3109	Receptor Filter Blanket	45" x 50' x 2"
29-3110	Receptor Filter Blanket	48" x 50' x 2"



BINKS TIGHT-SEAL™ INTAKE FILTERS

Part No.	Description	Qty	Shipping Weight*
29-486	20" x 20" x 1" Intake Filter	20/Case	15.00 lbs.

Dirt Control



DEVILBISS DIRT CONTROL FLOOR COATS

Part No.	Description
803491	Dirt Control Floor Coat 5 gal. Pail
803492	Pump Sprayer
29-3160	5 gal. Pail & Pump Sprayer

Disposable Floor Mat



BINKS DISPOSABLE PAINT BOOTH MATTING

Part No.	Size	Qty	Sheets Per Mat
29-3161	36" x 18"	4/Case	30
29-3162	45" x 24"	4/Case	30

* Shipping weights approximate

Spray Booth Floor Paper



BINKS FLAME RETARDANT PAPER

Part No.	Description
70 lb. Foot Traffic	
29-843	36" x 500' Roll
29-844	72" x 500' Roll
80 lb. Heavier Traffic	
29-863	36" x 300' Roll
29-864	42" x 300' Roll
29-865	60" x 300' Roll
100 lb. Fork Lift Traffic	
29-872	36" x 300' Roll
29-875	42" x 300' Roll
29-873	60" x 300' Roll

Peelable Spray Booth Coating



BINKS BOOTHCOAT™ PEELABLE SPRAY BOOTH COATING

Part No.	Description
29-248	1 gal. Can - Dries Clear
29-249	5 gal. Pail - Dries White
29-249-55	55 gal. Drum - Dries White

Clean Surface Prep



DEVILBISS PAINT PREP WIPES

Part No.	Qty
803657	300 ct Dispenser Box



DEVILBISS DEWIPE-OUTS™ & DEWIPE-OUTS™ REFILL CASE

Part No.	Description	Qty
803045	5% IPA/15% DI Water - Normal Climates Formula	50 Wipes/ Pouch
803046	50% IPA/50% DI Water - Dry Climates Formula	50 Wipes/ Pouch
803418	Acetone Blend - Low VOC Formula	50 Wipes/ Pouch
803048	DeWipe-Outs™ Refill Case	1



DEVILBISS TACK WIPE

Part No.	Description	Qty
803816	Moderate Tack: Cotton Individually Bagged	12/Box



DEVILBISS ANTI-STATIC WIPE

Part No.	Description	Qty
803553	Individually Bagged	12/Case

Our brands of DeVilbiss, Ransburg, MS, BGK and Binks, have a reputation for excellence built on innovative solutions that provide efficiency, productivity and cost improvements for our customers. Many of our successes begin on-site in our customers' facilities, where their needs are most apparent.

Thanks to the expertise of our salesforce and back office teams, Carlisle Fluid Technologies is able to provide practical and time-sensitive solutions to the most complex coating and fluid handling problems.

Our highly-trained workforce intimately understands the manufacturing challenges facing customers and can develop original and advanced solutions from the ground up.

Manufacturing, research and development worldwide

Carlisle Fluid Technologies is a global company with facilities located around the world.

We work in partnership with a long established team of distributors.

We manufacture and supply all types of spray finishing equipment and accessories.

Incorporating the world leading brands of DeVilbiss, Ransburg, MS, BGK and Binks, we produce advanced spray finishing equipment for the supply and application of all sprayed materials for all major manufacturing industries and markets.

For further information, visit our website at

www.CarlisleFT.com

DEVILBISS®

DEVILBISS manufactures low pressure manual and automatic spray guns and related spraying.

Ransburg®

RANSBURG is the acknowledged global leader in the design and manufacture of low and high pressure electrostatic finishing products, including manual and automatic guns, disc/bell rotary atomizers, and plural component systems.

ms®

MS is a leading manufacturer and installer of powder coating and booth systems with solutions ranging from mobile manual applicators to full production system installations.

BGK®

BGK manufactures a range of curing and conveying systems. BGK offers a range of curing systems including infrared and gas catalytic options.

BINKS®

BINKS manufactures a range of low and high pressure products including, Airless and Air Assisted Airless manual and automatic spray guns, high and low pressure pumps and regulators, pressure feed tanks, plural component electronic mixing systems and paint circulating system products.

Carlisle Fluid Technologies' network of fully approved distributors offer the highest standards of sales and service for DeVilbiss, Ransburg, MS, BGK and Binks products.



SOLUTIONS FOR YOUR WORLD

www.carlisleft.com

World Class Manufacturers of: | Process Controls | Curing & Conveying
Electrostatics | Fluid Handling | Powder Coating | Atomization

Carlisle Fluid Technologies US
16430 N. Scottsdale Road, Suite 450
Scottsdale, AZ 85254

Tel: 1-800-992-4657
Fax: 877-790-6965
Email: ghcustserv@carlisleft.com